

PARTS LIST

CAUTION

- The parts identified by the \triangle symbol are important for the safety . Whenever replacing these parts, be sure to use specified ones to secure the safety .
- The parts not indicated in this Parts List and those which are filled with lines --- in the Parts No. columns will not be supplied .
- P. W. Board Ass'y will not be supplied, but those which are filled with the Parts No. in the Parts No. columns will be supplied .

ABBREVIATIONS OF RESISTORS, CAPACITORS AND TOLERANCES

RESISTORS		CAPACITORS	
C R	Carbon Resistor	C CAP.	Ceramic Capacitor
F R	Fusible Resistor	E CAP.	Electrolytic Capacitor
P R	Plate Resistor	M CAP.	Mylar Capacitor
V R	Variable Resistor	CH CAP.	Chip Capacitor
HV R	High Voltage Resistor	HV CAP.	High Voltage Capacitor
MF R	Metal Film Resistor	MF CAP.	Metalized Film Capacitor
MG R	Metal Glazed Resistor	MM CAP.	Metalized Mylar Capacitor
MP R	Metal Plate Resistor	MP CAP.	Metalized Polystyrol Capacitor
OM R	Metal Oxide Film Resistor	PP CAP.	Polypropylene Capacitor
CMF R	Coating Metal Film Resistor	PS CAP.	Polystyrol Capacitor
UNF R	Non-Flammable Resistor	TF CAP.	Thin Film Capacitor
CH V R	Chip Variable Resistor	MPP CAP.	Metalized Polypropylene Capacitor
CH MG R	Chip Metal Glazed Resistor	TAN. CAP.	Tantalum Capacitor
COMP. R	Composition Resistor	CH C CAP.	Chip Ceramic Capacitor
LPTC R	Linear Positive Temperature Coefficient Resistor	BP E CAP.	Bi-Polar Electrolytic Capacitor
		CH AL E CAP.	Chip Aluminum Electrolytic Capacitor
		CH AL BP CAP.	Chip Aluminum Bi-Polar Capacitor
		CH TAN. E CAP.	Chip Tantalum Electrolytic Capacitor
		CH AL BP E CAP.	Chip Tantalum Bi-Polar Electrolytic Capacitor

RESISTORS									
F	G	J	K	M	N	R	H	Z	P
±1%	±2%	±5%	±10%	±20%	±30%	+30% -10%	+50% -10%	+80% -20%	+100% 0%

CONTENTS

USING P.W. BOARD & REMOTE CONTROL UNIT	41
EXPLODED VIEW PARTS LIST-I	41
EXPLODED VIEW-I	41
EXPLODED VIEW PARTS LIST-II	42
EXPLODED VIEW-II	43
PRINTED WIRING BOARD PARTS LIST [AV-25LS3]	44
MAIN PW BOARD ASS'Y	44
DIFFERENCE PARTS LIST BETWEEN AV-25LS3, AV-25LS3/AU AND AV-25LH3	50
PRINTED WIRING BOARD PARTS LIST [AV-25LX3]	51
MAIN PW BOARD ASS'Y	51
DIFFERENCE PARTS LIST BETWEEN AV-25LX3, AV-25LX3/A, AV-25LX3/AU AND AV-2568TEE	57
REMOTE CONTROL UNIT PARTS LIST	58
PACKING / PACKING PARTS LIST	59

USING P.W. BOARD & REMOTE CONTROL UNIT

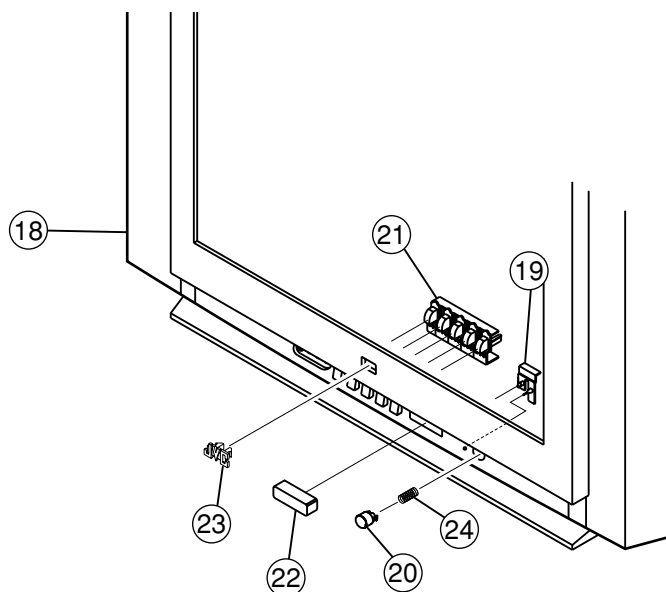
P.W.B ASS'Y	Model	AV-25LS3	AV-25LS3/AU	AV-25LH3
MAIN PWB ASSY (include CRT SOCKET PWB)		SCH-1080A-H2	SCH-1086A-H2	SCH-1096A-H2
REMOTE CONTROL UNIT		RM-C1010-1H	←	RM-C1011-1H

P.W.B ASS'Y	Model	AV-25LX3	AV-25LX3/A	AV-25LX3/AU	AV-2568TEE
MAIN PWB ASSY (include CRT SOCKET PWB)		SCH-1087A-H2	←	SCH-1098-H2	SCH-1097A-H2
REMOTE CONTROL UNIT		RM-C1014-1H	←	←	RM-C1013-1H

EXPLODED VIEW PARTS LIST-I

△ Ref.No.	Part No.	Part Name	Description	Local
18	GG10133-017B-H	FRONT CABI	[AV-25LS3, AV-25LS3/AU]	
18	GG10133-021B-H	FRONT CABI	[AV-25LH3]	
18	GG10133-018B-H	FRONT CABI	[AV-25LX3, AV-25LX3/A, AV-25LX3/AU]	
18	GG10133-019B-H	FRONT CABI	[AV-2568TEE]	
19	GG30021-001A-H	LED LENS		
20	GG30019-003A-H	POWER KNOB		
21	GG20006-003A-H	CONTROL KNOB		
22	GG30020-001A-H	E.E. WINDOW		
23	GG40023-001A-H	JVC MARK		
24	CM35235-003-H	SPRING		

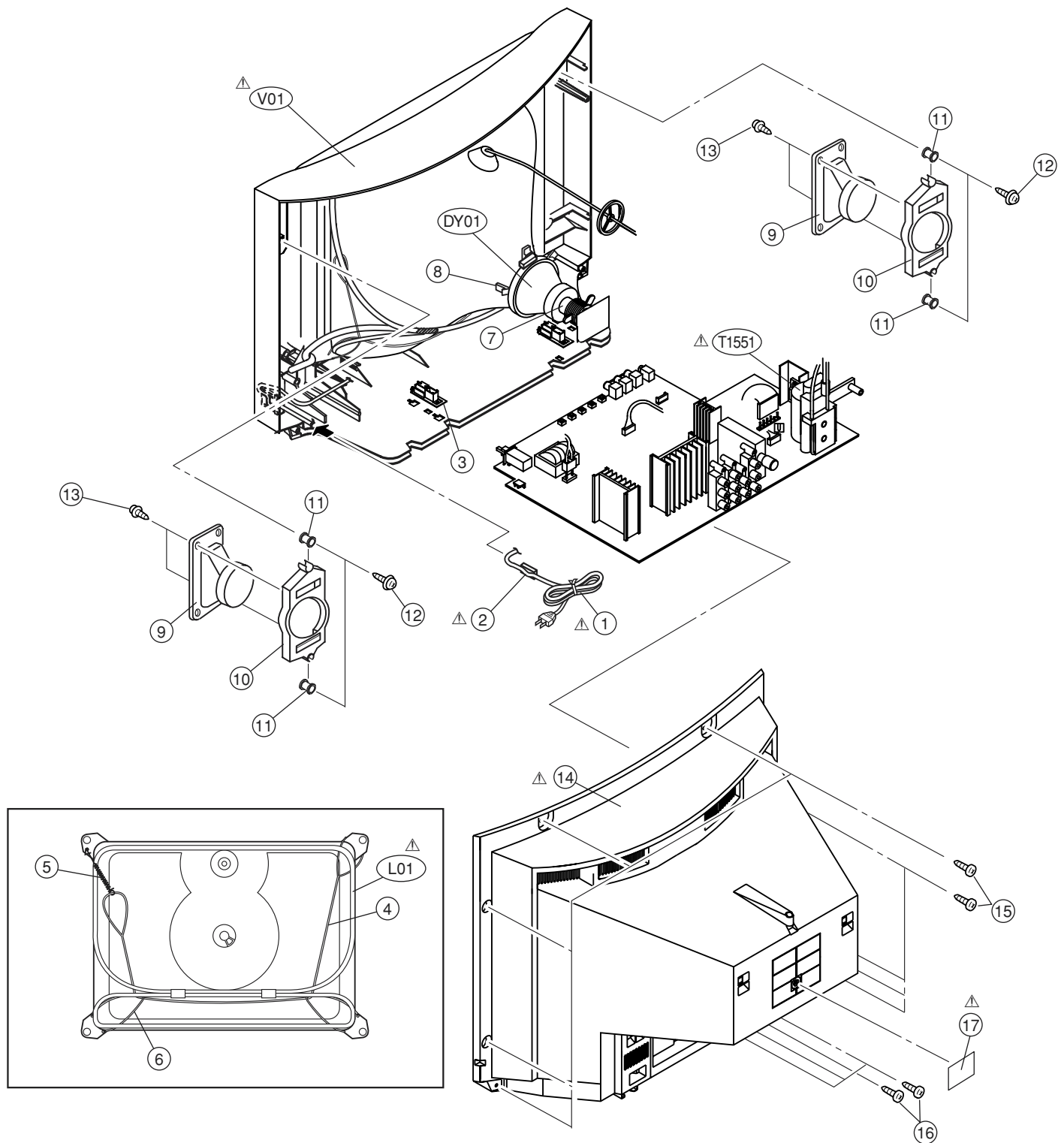
EXPLODED VIEW-I



EXPLODED VIEW PARTS LIST-II

△ Ref.No.	Part No.	Part Name	Description	Local
△ V01	A60LVY196X	PICTURE TUBE		
△ L01	QQW0119-001	DEG COIL	[AV-25LS3, AV-25LH3, AV-25LX3, AV-25LX3 _A , AV-2568TEE]	
△ L01	QQW0147-001	DEG COIL	[AV-25LS3 _{AU} , AV-25LX3 _{AU}]	
△ DY01	QQD0078-002	DEFLECTION YOKE		
△ T1551	QQH0141-001	FBT		
△ 1	QMPR340-165-K2	POWER CORD	[AV-25LS3, AV-25LX3, AV-2568TEE]	
△ 1	QMPG090-165-K2	POWER CORD	[AV-25LS3 _{AU} , AV-25LX3 _{AU}]	
△ 1	QMPR370-165-E2	POWER CORD	[AV-25LH3]	
△ 1	QMPR380-165-K2	POWER CORD	[AV-25LX3 _A]	
△ 2	CM47005-A01-H	CORD CLAMP		
3	CM36623-B01-H	CHASSIS RAIL	(X2)	
4	CHGB0028-0A	BRAIDED ASS'Y		
5	A48457-3-H	SPRING		
6	CHGB0017-0C	BRAIDED WIRE	(X2)	
7	A75034-B	PC MAGNET		
8	CE40764-00A	WEDGE ASS'Y	(X4)	
9	QAS0083-001	SPEAKER	(X2) SP01, SP02	
10	LC20371-001D-H	SP HOLDER	(X2)	
11	LC40226-003A-H	SPACER	(X4)	
12	LC40317-002A-H	TAPPING SCREW	(X4)	
13	QYSBSB4012Z	TAPPING SCREW	(X4)	
△ 14	GG10134-001B-H	REAR COVER	[AV-25LS3, AV-25LX3, AV-25LX3 _A , AV-2568TEE]	
△ 14	GG10134-003A-H	REAR COVER	[AV-25LS3 _{AU} , AV-25LH3, AV-25LX3 _{AU}]	
15	QYSBSFG4016Z	TAPPING SCREW	(X9)	
16	QYSBSF3010Z	TAPPING SCREW	(X4)	
△ 17	GG20024-001B-H	RATING LABEL		

EXPLODED VIEW-II



PRINTED WIRING BOARD PARTS LIST [AV-25LS3]

MAIN PW BOARD ASS'Y(SCH-1080A-H2)

△	Symbol No.	Part No.	Part Name	Description	Local	△	Symbol No.	Part No.	Part Name	Description	Local
RESISTOR						RESISTOR					
	R1001	NRSA63J-221X	MG R	220Ω	1/16W J		R1414	QRE121J-8R2Y	C R	8.2Ω	1/2W J
	R1002	NRSA63J-221X	MG R	220Ω	1/16W J		R1425	NRSA63J-683X	MG R	68kΩ	1/16W J
	R1003	NRSA63J-392X	MG R	3.9kΩ	1/16W J		R1480	QRE121J-681Y	C R	680Ω	1/2W J
	R1004	NRSA63J-221X	MG R	220Ω	1/16W J		R1481	NRSA63J-223X	MG R	22kΩ	1/16W J
	R1006	NRSA63J-273X	MG R	27kΩ	1/16W J		R1482	NRSA63J-562X	MG R	5.6kΩ	1/16W J
	R1007	NRSA63J-750X	MG R	75Ω	1/16W J		R1483	NRSA63J-823X	MG R	82kΩ	1/16W J
	R1101	NRSA63J-100X	MG R	10Ω	1/16W J		R1484	NRSA63J-562X	MG R	5.6kΩ	1/16W J
	R1102	NRSA63J-682X	MG R	6.8kΩ	1/16W J		R1485	NRSA63J-562X	MG R	5.6kΩ	1/16W J
	R1103	NRSA63J-272X	MG R	2.7kΩ	1/16W J		R1486	NRSA63J-272X	MG R	2.7kΩ	1/16W J
	R1104	NRSA63J-181X	MG R	180Ω	1/16W J		R1487	NRSA63J-333X	MG R	33kΩ	1/16W J
	R1105	NRSA63J-220X	MG R	22Ω	1/16W J		R1489	NRSA63J-122X	MG R	1.2kΩ	1/16W J
	R1106	NRSA63J-101X	MG R	100Ω	1/16W J		R1490	NRSA63J-102X	MG R	1kΩ	1/16W J
	R1107	NRSA63J-472X	MG R	4.7kΩ	1/16W J		R1491	NRSA63J-562X	MG R	5.6kΩ	1/16W J
	R1108	NRSA63J-222X	MG R	2.2kΩ	1/16W J		R1492	NRSA63J-822X	MG R	8.2kΩ	1/16W J
	R1109	NRSA63J-222X	MG R	2.2kΩ	1/16W J		R1493	QRE121J-333Y	C R	33kΩ	1/2W J
	R1110	NRSA63J-222X	MG R	2.2kΩ	1/16W J		R1494	QRL039J-470	OM R	47Ω	3W J
	R1111	NRSA63J-102X	MG R	1kΩ	1/16W J		R1521	NRSA63J-101X	MG R	100Ω	1/16W J
	R1112	NRSA63J-103X	MG R	10kΩ	1/16W J		R1522	NRSA63J-102X	MG R	1kΩ	1/16W J
	R1117	NRSA63J-102X	MG R	1kΩ	1/16W J		R1524	QRL039J-560	OM R	56Ω	3W J
	R1119	NRSA63J-102X	MG R	1kΩ	1/16W J		R1526	QRL029J-271	OM R	270Ω	2W J
	R1120	NRSA63J-471X	MG R	470Ω	1/16W J		R1527	QRL039J-103	OM R	10kΩ	3W J
	R1150	NRSA63J-331X	MG R	330Ω	1/16W J		R1528	QRX029J-R47	MF R	0.47Ω	2W J
	R1151	NRSA63J-222X	MG R	2.2kΩ	1/16W J		R1529	QRX029J-R47	MF R	0.47Ω	2W J
	R1152	NRSA63J-121X	MG R	120Ω	1/16W J		R1531	NRSA63J-222X	MG R	2.2kΩ	1/16W J
	R1153	NRSA63J-122X	MG R	1.2kΩ	1/16W J		△ R1532	QRZ9017-4R7	F R	4.7Ω	1/4W J
	R1154	NRSA63J-181X	MG R	180Ω	1/16W J		R1540	QRL039J-470	OM R	47Ω	3W J
	R1301	NRSA63J-222X	MG R	2.2kΩ	1/16W J		R1541	QRE121J-124Y	C R	120kΩ	1/2W J
	R1302	NRSA63J-222X	MG R	2.2kΩ	1/16W J		R1542	QRE121J-124Y	C R	120kΩ	1/2W J
	R1303	NRSA63J-562X	MG R	5.6kΩ	1/16W J		R1543	QRE121J-471Y	C R	470Ω	1/2W J
	R1304	NRSA63J-222X	MG R	2.2kΩ	1/16W J		R1545	QRE121J-220Y	C R	22Ω	1/2W J
	R1305	NRSA63J-222X	MG R	2.2kΩ	1/16W J		R1546	QRE121J-822Y	C R	8.2kΩ	1/2W J
	R1306	NRSA63J-562X	MG R	5.6kΩ	1/16W J		R1591	QRE121J-472Y	C R	4.7kΩ	1/2W J
	R1351	NRSA63J-151X	MG R	150Ω	1/16W J		R1592	QRZ0221-3R9	OM R	3.9Ω	2W J
	R1352	QRL029J-123	OM R	12kΩ	2W J		R1593	NRSA63J-821X	MG R	820Ω	1/16W J
	R1353	NRSA63J-182X	MG R	1.8kΩ	1/16W J		R1594	QRE121J-183Y	C R	18kΩ	1/2W J
	R1354	NRSA63J-331X	MG R	330Ω	1/16W J		R1595	NRSA63J-222X	MG R	2.2kΩ	1/16W J
	R1355	NRSA63J-101X	MG R	100Ω	1/16W J		R1602	NRSA63J-271X	MG R	270Ω	1/16W J
	R1356	QRE121J-102Y	C R	1kΩ	1/2W J		R1603	NRSA63J-101X	MG R	100Ω	1/16W J
	R1357	QRZ0107-152Z	C R	1.5kΩ	1W K		R1604	NRSA63J-101X	MG R	100Ω	1/16W J
	R1358	QRE121J-272Y	C R	2.7kΩ	1/2W J		R1621	NRSA63J-0R0X	MG R	0.0Ω	1/16W J
	R1359	QRE121J-561Y	C R	560Ω	1/2W J		R1622	NRSA63J-0R0X	MG R	0.0Ω	1/16W J
	R1361	NRSA63J-151X	MG R	150Ω	1/16W J		R1624	NRSA63J-101X	MG R	100Ω	1/16W J
	R1362	QRL029J-123	OM R	12kΩ	2W J		R1625	NRSA63J-101X	MG R	100Ω	1/16W J
	R1363	NRSA63J-182X	MG R	1.8kΩ	1/16W J		R1626	NRSA63J-102X	MG R	1kΩ	1/16W J
	R1364	NRSA63J-331X	MG R	330Ω	1/16W J		R1627	NRSA63J-102X	MG R	1kΩ	1/16W J
	R1365	NRSA63J-101X	MG R	100Ω	1/16W J		R1650	NRSA63J-103X	MG R	10kΩ	1/16W J
	R1366	QRE121J-102Y	C R	1kΩ	1/2W J		R1651	NRSA63J-822X	MG R	8.2kΩ	1/16W J
	R1367	QRZ0107-152Z	C R	1.5kΩ	1W K		R1654	NRSA63J-103X	MG R	10kΩ	1/16W J
	R1368	NRSA63J-332X	MG R	3.3kΩ	1/16W J		R1655	NRSA63J-822X	MG R	8.2kΩ	1/16W J
△	R1369	QRZ9017-4R7	F R	4.7Ω	1/4W J		R1658	QRE121J-2R2Y	C R	2.2Ω	1/2W J
	R1370	NRSA63J-151X	MG R	150Ω	1/16W J		R1659	QRE121J-2R2Y	C R	2.2Ω	1/2W J
	R1371	QRL029J-123	OM R	12kΩ	2W J		R1660	NRSA63J-103X	MG R	10kΩ	1/16W J
	R1372	NRSA63J-182X	MG R	1.8kΩ	1/16W J		R1661	NRSA63J-683X	MG R	68kΩ	1/16W J
	R1373	NRSA63J-331X	MG R	330Ω	1/16W J		R1662	NRSA63J-333X	MG R	33kΩ	1/16W J
	R1374	NRSA63J-101X	MG R	100Ω	1/16W J		R1663	NRSA63J-103X	MG R	10kΩ	1/16W J
	R1375	QRE121J-102Y	C R	1kΩ	1/2W J		R1664	NRSA63J-222X	MG R	2.2kΩ	1/16W J
	R1376	QRZ0107-152Z	C R	1.5kΩ	1W K		R1686	NRSA63J-102X	MG R	1kΩ	1/16W J
	R1377	NRSA63J-330X	MG R	33Ω	1/16W J		R1687	NRSA63J-103X	MG R	10kΩ	1/16W J
	R1378	NRSA63J-223X	MG R	22kΩ	1/16W J		R1688	NRSA63J-273X	MG R	27kΩ	1/16W J
	R1379	NRSA63J-103X	MG R	10kΩ	1/16W J		R1690	NRSA63J-104X	MG R	100kΩ	1/16W J
	R1383	QRE121J-394Y	C R	390kΩ	1/2W J		R1698	NRSA63J-104X	MG R	100kΩ	1/16W J
	R1384	NRSA63J-103X	MG R	10kΩ	1/16W J		R1699	NRSA63J-104X	MG R	100kΩ	1/16W J
	R1385	QRE141J-393Y	C R	39kΩ	1/4W J		R1701	NRSA63J-101X	MG R	100Ω	1/16W J
	R1401	NRSA63J-224X	MG R	220kΩ	1/16W J		R1702	NRSA63J-101X	MG R	100Ω	1/16W J
	R1403	NRSA63J-0R0X	MG R	0.0Ω	1/16W J		R1703	NRSA63J-101X	MG R	100Ω	1/16W J
	R1405	NRSA63J-682X	MG R	6.8kΩ	1/16W J		R1704	NRSA63J-102X	MG R	1kΩ	1/16W J
	R1406	NRSA63J-123X	MG R	12kΩ	1/16W J		R1705	NRSA63J-102X	MG R	1kΩ	1/16W J
	R1408	NRSA63J-682X	MG R	6.8kΩ	1/16W J		R1706	NRSA63J-102X	MG R	1kΩ	1/16W J
	R1410	NRSA63J-123X	MG R	12kΩ	1/16W J		R1707	NRSA63J-472X	MG R	4.7kΩ	1/16W J
	R1411	QRG01GJ-221	OM R	220Ω	1W J		R1708	NRSA63J-472X	MG R	4.7kΩ	1/16W J
	R1412	QRE121J-1R0Y	C R	1Ω	1/2W J		R1709	NRSA63J-472X	MG R	4.7kΩ	1/16W J
	R1413	QRX01GJ-2R7	MF R	2.7Ω	1W J		R1710	NRSA63J-472X	MG R	4.7kΩ	1/16W J

△	Symbol No.	Part No.	Part Name	Description	Local	△	Symbol No.	Part No.	Part Name	Description	Local	
RESISTOR						RESISTOR						
R1711		NRSA63J-101X	MG R	100Ω 1/16W J		R1820		NRSA63J-101X	MG R	100Ω 1/16W J		
R1712		NRSA63J-101X	MG R	100Ω 1/16W J		R1821		NRSA63J-222X	MG R	2.2kΩ 1/16W J		
R1713		NRSA63J-101X	MG R	100Ω 1/16W J		R1823		NRSA63J-101X	MG R	100Ω 1/16W J		
R1714		NRSA63J-101X	MG R	100Ω 1/16W J		R1824		NRSA63J-222X	MG R	2.2kΩ 1/16W J		
R1715		NRSA63J-103X	MG R	10kΩ 1/16W J		R1826		NRSA63J-101X	MG R	100Ω 1/16W J		
R1716		NRSA63J-103X	MG R	10kΩ 1/16W J		R1829		NRSA63J-750X	MG R	75Ω 1/16W J		
R1717		NRSA63J-103X	MG R	10kΩ 1/16W J		R1830		NRSA63J-222X	MG R	2.2kΩ 1/16W J		
R1718		NRSA63J-221X	MG R	220Ω 1/16W J		R1831		NRSA63J-222X	MG R	2.2kΩ 1/16W J		
R1719		NRSA63J-221X	MG R	220Ω 1/16W J		R1832		NRSA63J-122X	MG R	1.2kΩ 1/16W J		
R1720		NRSA63J-102X	MG R	1kΩ 1/16W J		R1833		NRSA63J-102X	MG R	1kΩ 1/16W J		
R1721		NRSA63J-221X	MG R	220Ω 1/16W J		R1834		NRSA63J-562X	MG R	5.6kΩ 1/16W J		
R1722		NRSA63J-221X	MG R	220Ω 1/16W J		R1835		NRSA63J-562X	MG R	5.6kΩ 1/16W J		
R1723		NRSA63J-221X	MG R	220Ω 1/16W J		R1836		NRSA63J-750X	MG R	75Ω 1/16W J		
R1724		NRSA63J-221X	MG R	220Ω 1/16W J		R1837		NRSA63J-101X	MG R	100Ω 1/16W J		
R1725		NRSA63J-103X	MG R	10kΩ 1/16W J		R1838		QRK126J-121X	UNF R	120Ω 1/2W J		
R1726		NRSA63J-472X	MG R	4.7kΩ 1/16W J		R1839		QRE121J-221Y	C R	220Ω 1/2W J		
R1727		NRSA63J-104X	MG R	100kΩ 1/16W J		R1840		QRE121J-221Y	C R	220Ω 1/2W J		
R1728		NRSA63J-103X	MG R	10kΩ 1/16W J		R1841		NRSA63J-0R0X	MG R	0.0Ω 1/16W J		
R1729		NRSA63J-470X	MG R	47Ω 1/16W J		R1842		NRSA63J-0R0X	MG R	0.0Ω 1/16W J		
R1730		NRSA63J-223X	MG R	22kΩ 1/16W J		R1843		NRSA63J-821X	MG R	820Ω 1/16W J		
R1731		NRSA63J-101X	MG R	100Ω 1/16W J		R1844		NRSA63J-222X	MG R	2.2kΩ 1/16W J		
R1732		NRSA02F-393X	MG R	39kΩ 1/10W F		R1845		NRSA63J-102X	MG R	1kΩ 1/16W J		
R1733		NRSA63J-273X	MG R	27kΩ 1/16W J		R1846		NRSA63J-222X	MG R	2.2kΩ 1/16W J		
R1734		NRSA63J-391X	MG R	390Ω 1/16W J		R1847		NRSA63J-103X	MG R	10kΩ 1/16W J		
R1735		NRSA63J-104X	MG R	100kΩ 1/16W J		R1848		NRSA63J-471X	MG R	470Ω 1/16W J		
R1736		NRSA63J-333X	MG R	33kΩ 1/16W J		R1849		NRSA63J-221X	MG R	220Ω 1/16W J		
R1737		NRSA63J-272X	MG R	2.7kΩ 1/16W J		R1880		NRSA63J-202X	MG R	2kΩ 1/16W J		
R1738		NRSA63J-0R0X	MG R	0.0Ω 1/16W J		R1881		NRSA63J-103X	MG R	10kΩ 1/16W J		
R1739		NRSA63J-101X	MG R	100Ω 1/16W J		R1882		NRSA63J-471X	MG R	470Ω 1/16W J		
R1740		NRSA63J-101X	MG R	100Ω 1/16W J		R1883		NRSA63J-181X	MG R	180Ω 1/16W J		
R1741		NRSA63J-101X	MG R	100Ω 1/16W J		R1902		QRF154K-2R2	UNF R	2.2Ω 15W K		
R1742		NRSA63J-0R0X	MG R	0.0Ω 1/16W J		R1904		QRE121J-681Y	C R	680Ω 1/2W J		
R1743		NRSA63J-681X	MG R	680Ω 1/16W J		R1905		QRM034J-R15	MP R	0.15Ω 3W J		
R1744		NRSA63J-561X	MG R	560Ω 1/16W J		R1907		NRSA63J-563X	MG R	56kΩ 1/16W J		
R1745		NRSA63J-105X	MG R	1MΩ 1/16W J		R1908		QRL039J-333	OM R	33kΩ 3W J		
R1746		NRSA63J-333X	MG R	33kΩ 1/16W J		R1909		QRE121J-474Y	C R	470kΩ 1/2W J		
R1747		NRSA63J-103X	MG R	10kΩ 1/16W J		R1910		QRE121J-472Y	C R	4.7kΩ 1/2W J		
R1748		NRSA02J-475X	MG R	4.7MΩ 1/10W J		R1911		QRE121J-332Y	C R	3.3kΩ 1/2W J		
R1749		NRSA02J-475X	MG R	4.7MΩ 1/10W J		R1912		NRSA63J-152X	MG R	1.5kΩ 1/16W J		
R1750		NRSA63J-0R0X	MG R	0.0Ω 1/16W J		△ R1915		QRZ0111-474	C R	470kΩ 1W K		
R1755		NRSA63J-101X	MG R	100Ω 1/16W J		R1952		NRSA63J-332X	MG R	3.3kΩ 1/16W J		
R1756		NRSA63J-101X	MG R	100Ω 1/16W J		R1953		NRSA63J-101X	MG R	100Ω 1/16W J		
R1757		NRSA63J-222X	MG R	2.2kΩ 1/16W J		R1957		QRE121J-6R8Y	C R	6.8Ω 1/2W J		
R1758		NRSA63J-222X	MG R	2.2kΩ 1/16W J		R1960		NRSA63J-391X	MG R	390Ω 1/16W J		
R1760		NRSA63J-682X	MG R	6.8kΩ 1/16W J		R1961		QRL029J-223	OM R	22kΩ 2W J		
R1770		QRE121J-271Y	C R	270Ω 1/2W J		R1962		NRSA63J-561X	MG R	560Ω 1/16W J		
R1771		NRSA63J-102X	MG R	1kΩ 1/16W J		R1963		QRE121J-103Y	C R	10kΩ 1/2W J		
R1772		QRE121J-271Y	C R	270Ω 1/2W J		R1964		NRSA63J-473X	MG R	47kΩ 1/16W J		
R1773		NRSA63J-102X	MG R	1kΩ 1/16W J		R1965		NRSA63J-0R0X	MG R	0.0Ω 1/16W J		
R1775		NRSA63J-332X	MG R	3.3kΩ 1/16W J		R1966		NRSA63J-682X	MG R	6.8kΩ 1/16W J		
R1776		NRSA63J-392X	MG R	3.9kΩ 1/16W J		R1967		NRSA63J-473X	MG R	47kΩ 1/16W J		
R1777		NRSA63J-682X	MG R	6.8kΩ 1/16W J		R1970		NRSA63J-153X	MG R	15kΩ 1/16W J		
R1779		NRSA63J-272X	MG R	2.7kΩ 1/16W J		R1971		NRSA63J-183X	MG R	18kΩ 1/16W J		
R1780		NRSA63J-471X	MG R	470Ω 1/16W J		R1972		NRSA63J-391X	MG R	390Ω 1/16W J		
R1781		NRSA63J-122X	MG R	1.2kΩ 1/16W J		△ R1991		QRZ9046-825Z	C R	8.2MΩ 1W J		
R1782		NRSA63J-181X	MG R	180Ω 1/16W J								
R1783		NRSA63J-221X	MG R	220Ω 1/16W J		CAPACITOR						
R1784		NRSA63J-331X	MG R	330Ω 1/16W J		C1001		NCB31HK-103X	C CAP.	0.01μF 50V K		
R1785		NRSA63J-471X	MG R	470Ω 1/16W J		C1002		QETN1HM-106Z	E CAP.	10μF 50V M		
R1803		NRSA63J-333X	MG R	33kΩ 1/16W J		C1003		QFV71HJ-104Z	MF CAP.	0.1μF 50V J		
R1804		NRSA63J-750X	MG R	75Ω 1/16W J		C1004		QETN1CM-477Z	E CAP.	470μF 16V M		
R1805		NRSA63J-750X	MG R	75Ω 1/16W J		C1005		NCB31HK-222X	C CAP.	2200pF 50V K		
R1806		NRSA63J-750X	MG R	75Ω 1/16W J		C1006		QETN1CM-336Z	E CAP.	33μF 16V M		
R1807		NRSA63J-750X	MG R	75Ω 1/16W J		C1007		NCB31HK-103X	C CAP.	0.01μF 50V K		
						C1101		NCB31HK-472X	C CAP.	4700pF 50V K		
R1808		NRSA63J-823X	MG R	82kΩ 1/16W J		C1102		NCB31HK-472X	C CAP.	4700pF 50V K		
R1809		NRSA63J-391X	MG R	390Ω 1/16W J		C1103		NCB31HK-472X	C CAP.	4700pF 50V K		
R1810		NRSA63J-823X	MG R	82kΩ 1/16W J		C1104		NCB31HK-472X	C CAP.	4700pF 50V K		
R1811		NRSA63J-391X	MG R	390Ω 1/16W J		C1105		NCB31HK-472X	C CAP.	4700pF 50V K		
R1812		NRSA63J-104X	MG R	100kΩ 1/16W J		C1106		NDC21HJ-180X	C CAP.	18pF 50V J		
R1813		NRSA63J-222X	MG R	2.2kΩ 1/16W J		C1107		NCB31HK-103X	C CAP.	0.01μF 50V K		
R1815		NRSA63J-101X	MG R	100Ω 1/16W J		C1108		NCB31HK-472X	C CAP.	4700pF 50V K		
R1818		NRSA63J-222X	MG R	2.2kΩ 1/16W J		C1109		QETN1HM-106Z	E CAP.	10μF 50V M		

△ Symbol No.	Part No.	Part Name	Description	Local
CAPACITOR				
C1150	NCB31HK-472X	C CAP.	4700pF 50V K	
C1151	NCB31HK-472X	C CAP.	4700pF 50V K	
C1308	NCB31HK-103X	C CAP.	0.01μF 50V K	
C1310	NRSA63J-0R0X	MG R	0.0Ω 1/16W J	
C1350	NDC21HJ-471X	C CAP.	470pF 50V J	
C1351	NDC31HJ-561X	C CAP.	560pF 50V J	
C1352	QETN2EM-475Z	E CAP.	4.7μF 250V M	
C1353	QETN1HM-107Z	E CAP.	100μF 50V M	
C1354	QETN1HM-105Z	E CAP.	1μF 50V M	
C1360	NDC21HJ-471X	C CAP.	470pF 50V J	
C1361	NDC31HJ-561X	C CAP.	560pF 50V J	
C1370	NDC21HJ-471X	C CAP.	470pF 50V J	
C1371	NDC31HJ-681X	C CAP.	680pF 50V J	
C1372	NRSA63J-0R0X	MG R	0.0Ω 1/16W J	
C1374	QZ0364-22Z	C CAP.	2200pF	
C1375	QETN1CM-477Z	E CAP.	470μF 16V M	
C1401	QETN1HM-105Z	E CAP.	1μF 50V M	
C1402	QCB31HK-682Z	C CAP.	6800pF 50V K	
C1403	QEHR1VM-227Z	E CAP.	220μF 35V M	
C1406	QFLC2AJ-683Z	M CAP.	0.068μF 100V J	
C1407	QCS32HJ-180Z	C CAP.	18pF 500V J	
C1408	QFV71HJ-184Z	MF CAP.	0.18μF 50V J	
C1411	NCF21HZ-334X	C CAP.	0.33μF 50V Z	
C1412	NCF21HZ-334X	C CAP.	0.33μF 50V Z	
C1413	QFLC2AJ-563Z	M CAP.	0.056μF 100V J	
C1422	QEHQ1VM-108	E CAP.	1000μF 35V M	
C1480	QETN1HM-106Z	E CAP.	10μF 50V M	
C1483	QEZO195-475Z	BP E CAP.	4.7μF 50V M	
C1485	QETN1HM-226Z	E CAP.	22μF 50V M	
C1521	QETN1VM-476Z	E CAP.	47μF 35V M	
C1522	QFLC1HJ-332Z	M CAP.	3300pF 50V J	
C1523	QFLC1HJ-223Z	M CAP.	0.022μF 50V J	
C1524	QFZ0200-452	MPP CAP.	4500pF 1.5kVH±3%	
C1525	QFZ0200-113	MPP CAP.	0.011μF 1.5kVH±3%	
C1526	QFP32GJ-183	PP CAP.	0.018μF 400V J	
C1527	QFZ0199-154	MPP CAP.	0.15μF AC250V J	
C1528	QFZ0199-224	MPP CAP.	0.22μF AC250V J	
C1529	QENC2AM-225Z	BP E CAP.	2.2μF 100V M	
C1530	QCB32HK-561Z	C CAP.	560pF 500V K	
C1531	QEHR1EM-108Z	E CAP.	1000μF 25V M	
C1533	QEHR1EM-108Z	E CAP.	1000μF 25V M	
C1535	QCB32HK-101Z	C CAP.	100pF 500V K	
C1536	QFLC1HJ-103Z	M CAP.	0.01μF 50V J	
C1540	QFV71HJ-104Z	MF CAP.	0.1μF 50V J	
C1541	QETN2EM-226Z	E CAP.	22μF 250V M	
C1542	QETN2EM-226Z	E CAP.	22μF 250V M	
C1550	NCB31CK-104X	C CAP.	0.1μF 16V K	
C1591	QETN1AM-107Z	E CAP.	100μF 10V M	
C1592	QETM2CM-227	E CAP.	220μF 160V M	
C1593	QETN1EM-476Z	E CAP.	47μF 25V M	
C1602	NCB31HK-103X	C CAP.	0.01μF 50V K	
C1603	QETN1CM-107Z	E CAP.	100μF 16V M	
C1604	NCB31CK-104X	C CAP.	0.1μF 16V K	
C1606	NDC31HJ-2R0X	C CAP.	2pF 50V J	
C1607	NDC31HJ-2R0X	C CAP.	2pF 50V J	
C1608	NCB31HK-103X	C CAP.	0.01μF 50V K	
C1609	NCB31HK-103X	C CAP.	0.01μF 50V K	
C1610	QETN1HM-106Z	E CAP.	10μF 50V M	
C1611	NCB31CK-104X	C CAP.	0.1μF 16V K	
C1612	QETN1HM-106Z	E CAP.	10μF 50V M	
C1613	NCB31CK-104X	C CAP.	0.1μF 16V K	
C1615	QETN1HM-106Z	E CAP.	10μF 50V M	
C1616	NCB31CK-104X	C CAP.	0.1μF 16V K	
C1617	QETN1HM-106Z	E CAP.	10μF 50V M	
C1619	NCB31CK-104X	C CAP.	0.1μF 16V K	
C1620	QETN1HM-106Z	E CAP.	10μF 50V M	
C1621	NCB31HK-102X	C CAP.	1000pF 50V K	
C1622	NCB31HK-102X	C CAP.	1000pF 50V K	
C1625	QETN1HM-475Z	E CAP.	4.7μF 50V M	
C1626	QETN1HM-475Z	E CAP.	4.7μF 50V M	
C1628	NCB31HK-472X	C CAP.	4700pF 50V K	
C1629	NCB31EK-104X	C CAP.	0.1μF 25V K	

△ Symbol No.	Part No.	Part Name	Description	Local
CAPACITOR				
C1630	QETN1HM-475Z	E CAP.	4.7μF 50V M	
C1631	NCB31EK-104X	C CAP.	0.1μF 25V K	
C1632	QETN1HM-475Z	E CAP.	4.7μF 50V M	
C1633	QETN1HM-475Z	E CAP.	4.7μF 50V M	
C1634	QETN1HM-475Z	E CAP.	4.7μF 50V M	
C1635	QETN1HM-107Z	E CAP.	100μF 50V M	
C1636	QETN1HM-475Z	E CAP.	4.7μF 50V M	
C1637	QETN1HM-475Z	E CAP.	4.7μF 50V M	
C1638	NCB31EK-104X	C CAP.	0.1μF 25V K	
C1639	NCF21CZ-105X	C CAP.	1μF 16V Z	
C1640	QETN1HM-475Z	E CAP.	4.7μF 50V M	
C1641	NCB31EK-104X	C CAP.	0.1μF 25V K	
C1642	NCB31HK-472X	C CAP.	4700pF 50V K	
C1644	QETN1HM-475Z	E CAP.	4.7μF 50V M	
C1645	QETN1HM-475Z	E CAP.	4.7μF 50V M	
C1650	QEHR1HM-106Z	E CAP.	10μF 50V M	
C1651	QEHR1VM-476Z	E CAP.	47μF 35V M	
C1652	QETN1HM-106Z	E CAP.	10μF 50V M	
C1655	QEHQ1VM-108	E CAP.	1000μF 35V M	
C1656	QEHQ1VM-108	E CAP.	1000μF 35V M	
C1659	NCF21HZ-224X	C CAP.	0.22μF 50V Z	
C1660	NCF21HZ-224X	C CAP.	0.22μF 50V Z	
C1661	NCF21HZ-224X	C CAP.	0.22μF 50V Z	
C1662	QEHR1VM-227Z	E CAP.	220μF 35V M	
C1663	NCF21HZ-224X	C CAP.	0.22μF 50V Z	
C1681	QETN1CM-227Z	E CAP.	220μF 16V M	
C1682	QETN1CM-227Z	E CAP.	220μF 16V M	
C1683	QETN1CM-336Z	E CAP.	33μF 16V M	
C1684	QETN1HM-106Z	E CAP.	10μF 50V M	
C1685	NRSA63J-0R0X	MG R	0.0Ω 1/16W J	
C1686	NRSA63J-0R0X	MG R	0.0Ω 1/16W J	
C1701	QETN1CM-227Z	E CAP.	220μF 16V M	
C1702	QETN1HM-106Z	E CAP.	10μF 50V M	
C1703	NDC31HJ-330X	C CAP.	33pF 50V J	
C1704	NDC31HJ-330X	C CAP.	33pF 50V J	
C1705	NCB31HK-102X	C CAP.	1000pF 50V K	
C1706	NCB21EK-224X	C CAP.	0.22μF 25V K	
C1707	QETN1CM-107Z	E CAP.	100μF 16V M	
C1709	QETN1CM-107Z	E CAP.	100μF 16V M	
C1710	NCB21EK-224X	C CAP.	0.22μF 25V K	
C1711	NCB31CK-104X	C CAP.	0.1μF 16V K	
C1713	NCB31CK-104X	C CAP.	0.1μF 16V K	
C1714	QETN1CM-476Z	E CAP.	47μF 16V M	
C1720	QETN1CM-476Z	E CAP.	47μF 16V M	
C1725	NCB31HK-681X	C CAP.	680pF 50V K	
C1730	NCB21EK-224X	C CAP.	0.22μF 25V K	
C1731	NCB21EK-224X	C CAP.	0.22μF 25V K	
C1732	QETN1CM-107Z	E CAP.	100μF 16V M	
C1733	NCB31CK-104X	C CAP.	0.1μF 16V K	
C1734	NCB31HK-222X	C CAP.	2200pF 50V K	
C1735	NCB31HK-222X	C CAP.	2200pF 50V K	
C1736	QETN1HM-105Z	E CAP.	1μF 50V M	
C1737	QETN1HM-105Z	E CAP.	1μF 50V M	
C1738	NCB31CK-104X	C CAP.	0.1μF 16V K	
C1739	NFV41CJ-104X	MPP CAP.	0.1μF 16V J	
C1740	QETN1HM-225Z	E CAP.	2.2μF 50V M	
C1741	NCB31CK-104X	C CAP.	0.1μF 16V K	
C1742	NCB31CK-104X	C CAP.	0.1μF 16V K	
C1743	QETN1CM-107Z	E CAP.	100μF 16V M	
C1744	NCB31HK-102X	C CAP.	1000pF 50V K	
C1745	NCB31EK-473X	C CAP.	0.047μF 25V K	
C1746	NCB31EK-473X	C CAP.	0.047μF 25V K	
C1747	NCB31EK-473X	C CAP.	0.047μF 25V K	
C1748	QETN1CM-476Z	E CAP.	47μF 16V M	
C1749	QETN1HM-106Z	E CAP.	10μF 50V M	
C1751	NCB31CK-104X	C CAP.	0.1μF 16V K	
C1752	NCB31CK-104X	C CAP.	0.1μF 16V K	
C1753	NCB31CK-104X	C CAP.	0.1μF 16V K	
C1760	NCB31HK-104X	C CAP.	0.1μF 50V K	
C1761	QETN1CM-107Z	E CAP.	100μF 16V M	
C1770	QETN1HM-106Z	E CAP.	10μF 50V M	
C1801	QETN1HM-106Z	E CAP.	10μF 50V M	

△	Symbol No.	Part No.	Part Name	Description	Local
CAPACITOR					
	C1802	QETN1HM-106Z	E CAP.	10μF 50V M	
	C1803	QETN1HM-106Z	E CAP.	10μF 50V M	
	C1804	QETN1HM-106Z	E CAP.	10μF 50V M	
	C1805	NCB31HK-104X	C CAP.	0.1μF 50V K	
	C1807	NCF31AZ-105X	C CAP.	1μF 10V Z	
	C1808	NCF31AZ-105X	C CAP.	1μF 10V Z	
	C1810	NCF31AZ-105X	C CAP.	1μF 10V Z	
	C1811	NCB31HK-104X	C CAP.	0.1μF 50V K	
	C1812	NCF31AZ-105X	C CAP.	1μF 10V Z	
	C1813	NCB31HK-103X	C CAP.	0.01μF 50V K	
	C1814	NCB31HK-104X	C CAP.	0.1μF 50V K	
	C1815	NCF31AZ-105X	C CAP.	1μF 10V Z	
	C1817	NCF31AZ-105X	C CAP.	1μF 10V Z	
	C1819	NCB31HK-104X	C CAP.	0.1μF 50V K	
	C1820	NCF31AZ-105X	C CAP.	1μF 10V Z	
	C1821	NCF31AZ-105X	C CAP.	1μF 10V Z	
	C1822	QETN1CM-477Z	E CAP.	470μF 16V M	
	C1823	QETN1CM-107Z	E CAP.	100μF 16V M	
	C1824	QETN1CM-107Z	E CAP.	100μF 16V M	
	C1825	NCB31HK-103X	C CAP.	0.01μF 50V K	
	C1826	NCB31HK-104X	C CAP.	0.1μF 50V K	
	C1827	NCB31HK-103X	C CAP.	0.01μF 50V K	
	C1829	NCB31HK-103X	C CAP.	0.01μF 50V K	
	C1830	NCB31HK-103X	C CAP.	0.01μF 50V K	
	C1831	NCB31HK-103X	C CAP.	0.01μF 50V K	
	C1833	QETN1HM-226Z	E CAP.	22μF 50V M	
	C1834	NDC31HJ-181X	C CAP.	180pF 50V J	
△	C1901	QFZ9075-104	MPP CAP.	0.1μF	
△	C1902	QFZ9075-473	MPP CAP.	0.047μF	
	C1903	QCZ9015-102Z	C CAP.	1000pF AC250V Z	
	C1904	QCZ9015-102Z	C CAP.	1000pF AC250V Z	
	C1905	QCZ9015-102Z	C CAP.	1000pF AC250V Z	
△	C1906	QFZ9072-224	MM CAP.	0.22μF	
	C1907	QEZ0476-337	E CAP.	330μF 400V M	
	C1908	QFZ0209-222	MPP CAP.	2200pF	
	C1910	NDC31HJ-471X	C CAP.	470pF 50V J	
	C1911	QEHR1EM-227Z	E CAP.	220μF 25V M	
	C1914	QETN1EM-227Z	E CAP.	220μF 25V M	
	C1915	QFLC1HJ-152Z	M CAP.	1500pF 50V J	
	C1916	NCB31HK-104X	C CAP.	0.1μF 50V K	
	C1952	QCB32HK-471Z	C CAP.	470pF 500V K	
	C1953	QEHQ1VM-108	E CAP.	1000μF 35V M	
	C1954	NCB31HK-102X	C CAP.	1000pF 50V K	
	C1955	QCB32HK-471Z	C CAP.	470pF 500V K	
	C1956	QETN1VM-227Z	E CAP.	220μF 35V M	
	C1957	QCB32HK-471Z	C CAP.	470pF 500V K	
	C1958	QEHQ1EM-228	E CAP.	2200μF 25V M	
	C1959	QCZ0122-561	C CAP.	560pF 2000V K	
	C1960	QEZ0203-227	E CAP.	220μF 160V M	
	C1961	QETN1HM-225Z	E CAP.	2.2μF 50V M	
	C1962	QETN1HM-106Z	E CAP.	10μF 50V M	
	C1964	QETN1CM-476Z	E CAP.	47μF 16V M	
	C1965	QETN1CM-107Z	E CAP.	100μF 16V M	
	C1968	NCB31CK-104X	C CAP.	0.1μF 16V K	
	C1972	QEHR1VM-476Z	E CAP.	47μF 35V M	
	C1973	QEHR1CM-107Z	E CAP.	100μF 16V M	
	C1974	NCB31CK-104X	C CAP.	0.1μF 16V K	
	C1975	QEHR1CM-227Z	E CAP.	220μF 16V M	
	C1976	QEHR1CM-107Z	E CAP.	100μF 16V M	
	C1977	QEHR1AM-477Z	E CAP.	470μF 10V M	
	C1978	NCB31HK-104X	C CAP.	0.1μF 50V K	
	C1980	QETN1CM-107Z	E CAP.	100μF 16V M	
△	C1991	QCZ9079-102	C CAP.	1000pF	
△	C1992	QCZ9079-102	C CAP.	1000pF	
△	C1993	QCZ9079-102	C CAP.	1000pF	
TRANSFORMER					
	T1521	QQR1229-001	DRIVE TRANSF		
△	T1551	QQH0141-001	FB TRANSF		
△	T1901	QQS0165-001	SW TRANSF		

△	Symbol No.	Part No.	Part Name	Description	Local
COIL					
	L1001	CE42050-001Z	BEADS CORE		
	L1002	CE42050-001Z	BEADS CORE		
	L1101	QQLZ014-R82	COIL	0.82μH	
	L1104	QQL244K-180Z	COIL	18μH	K
	L1480	QQR1138-001	CHOKE COIL		
	L1523	QQR1137-005	LINEARITY COIL		
	L1524	QQLZ034-240	COIL	24μH	
	L1540	QQL244J-5R6Z	COIL	5.6μH	J
	L1601	QQL244K-4R7Z	COIL	4.7μH	K
	L1701	QQL244K-100Z	COIL	10μH	K
	L1702	QQL244K-100Z	COIL	10μH	K
	L1731	QQL244J-5R6Z	COIL	5.6μH	J
	L1732	QQL244J-5R6Z	COIL	5.6μH	J
	L1951	QQLZ034-460	COIL	46μH	
	L1953	QQL244J-5R6Z	COIL	5.6μH	J
	L1954	QQL244J-5R6Z	COIL	5.6μH	J
DIODE					
	D1101	DAN235K-X	SI. DIODE		
	D1350	1SS244-T2	SI. DIODE		
	D1352	RGP10J-5025-T3	SI. DIODE		
	D1353	MA111-X	SI. DIODE		
	D1354	MA111-X	SI. DIODE		
	D1355	MA111-X	SI. DIODE		
	D1356	MA111-X	SI. DIODE		
	D1357	MA111-X	SI. DIODE		
	D1358	MA111-X	SI. DIODE		
	D1360	1SS244-T2	SI. DIODE		
	D1370	1SS244-T2	SI. DIODE		
	D1372	MA3075/M/-X	ZENER DIODE		
	D1373	MA111-X	SI. DIODE		
	D1374	MA111-X	SI. DIODE		
	D1401	RGP10J-5025-T3	SI. DIODE		
	D1402	MTZJ75-T2	ZENER DIODE		
	D1405	1N4003-T2	SI. DIODE		
	D1408	MA111-X	SI. DIODE		
	D1480	MTZJ4.3A-T2	ZENER DIODE		
	D1521	RH3G-F1	SI. DIODE		
	D1522	31DF6N-FC5	SI. DIODE		
	D1523	RGP10J-5025-T3	SI. DIODE		
	D1541	RGP10J-5025-T3	SI. DIODE		
	D1550	MA111-X	SI. DIODE		
	D1551	RGP10J-5025-T3	SI. DIODE		
	D1553	RGP10J-5025-T3	SI. DIODE		
	D1554	RGP10J-5025-T3	SI. DIODE		
	D1592	MA3075/H/-X	ZENER DIODE		
	D1652	MA3330/L/-X	ZENER DIODE		
	D1653	MA3330/L/-X	ZENER DIODE		
	D1655	MA111-X	SI. DIODE		
	D1682	MA111-X	SI. DIODE		
	D1702	MA3024-X	ZENER DIODE		
	D1703	MA3051/M/-X	ZENER DIODE		
	D1704	MA3033-X	ZENER DIODE		
	D1730	MA111-X	SI. DIODE		
	D1731	MA111-X	SI. DIODE		
	D1732	MA111-X	SI. DIODE		
	D1733	MA111-X	SI. DIODE		
	D1760	SLR-342VR-T16	LED		
	D1770	MA111-X	SI. DIODE		
	D1771	P1241-04	PHOTO CONDUCTOR		
	D1801	MA3120/M/-X	ZENER DIODE		
	D1802	MA3120/M/-X	ZENER DIODE		
	D1807	MA3100/M/-X	ZENER DIODE		
	D1808	MA3100/M/-X	ZENER DIODE		
	D1901	GSIB460	BRIDGE DIODE		
	D1903	MTZJ12C-T2	ZENER DIODE		
	D1904	EG01C-T2	SI. DIODE		
	D1906	EG01C-T2	SI. DIODE		
	D1907	MA3150/M/-X	ZENER DIODE		
	D1908	MTZJ27B-T2	ZENER DIODE		
	D1909	MA111-X	SI. DIODE		
	D1910	MA111-X	SI. DIODE		
	D1911	RGP10J-TS-T3	SI. DIODE		
	D1912	1SS133-T2	SI. DIODE		

△ Symbol No.	Part No.	Part Name	Description	Local
DIODE				
D1914	ERC30-02L38	SI. DIODE		
D1952	ERC30-02L38	SI. DIODE		
D1953	RGP10J-5025-T3	SI. DIODE		
D1954	RGP30B-F1	SI. DIODE		
D1956	31DF6N-FC5	SI. DIODE		
D1964	MA3330/L-X	ZENER DIODE		
D1965	1SS133-T2	SI. DIODE		
D1966	MA3068/M-X	ZENER DIODE		
D1968	MA111-X	SI. DIODE		
D1969	MA111-X	SI. DIODE		
D1971	MA111-X	SI. DIODE		

TRANSISTOR

Q1101	2SC5083/L-P/-T	TRANSISTOR		
Q1102	UN2212-X	DIGI. TRANSISTOR		
Q1103	UN2212-X	DIGI. TRANSISTOR		
Q1104	2SB709A/QR/-X	TRANSISTOR		
Q1105	UN2212-X	DIGI. TRANSISTOR		
Q1106	UN2212-X	DIGI. TRANSISTOR		
Q1108	2SD601A/QR/-X	TRANSISTOR		
Q1109	2SB709A/QR/-X	TRANSISTOR		
Q1110	UN2212-X	DIGI. TRANSISTOR		
Q1111	2SD601A/QR/-X	TRANSISTOR		
Q1150	2SD601A/QR/-X	TRANSISTOR		
Q1301	2SB709A/QR/-X	TRANSISTOR		
Q1302	2SB709A/QR/-X	TRANSISTOR		
Q1350	STC344-T	TRANSISTOR		
Q1351	2SA1321-T	TRANSISTOR		
Q1352	2SB709A/QR/-X	TRANSISTOR		
Q1360	STC344-T	TRANSISTOR		
Q1361	2SA1321-T	TRANSISTOR		
Q1370	STC344-T	TRANSISTOR		
Q1371	2SA1321-T	TRANSISTOR		
Q1374	2SD601A/QR/-X	TRANSISTOR		
Q1375	2SD601A/QR/-X	TRANSISTOR		
Q1376	2SD601A/QR/-X	TRANSISTOR		
Q1480	2SD1408/OY/-LB	POW TRANSISTOR		
Q1521	2SC2655/Y/-T	TRANSISTOR		
Q1522	2SD2634-YD	POW TRANSISTOR		
Q1591	2SA1208/ST/Z1-T	TRANSISTOR		
Q1592	UN2212-X	DIGI. TRANSISTOR		
Q1660	2SD601A/QR/-X	TRANSISTOR		
Q1661	2SD601A/QR/-X	TRANSISTOR		
Q1683	2SB709A/QR/-X	TRANSISTOR		
Q1684	2SB709A/QR/-X	TRANSISTOR		
Q1685	DTC323TK-X	DIGI. TRANSISTOR		
Q1686	DTC323TK-X	DIGI. TRANSISTOR		
Q1701	2SB709A/QR/-X	TRANSISTOR		
Q1702	2SB709A/QR/-X	TRANSISTOR		
Q1703	FMC2A-X	DIGI. TRANSISTOR		
Q1720	2SB709A/QR/-X	TRANSISTOR		
Q1770	2SB709A/QR/-X	TRANSISTOR		
Q1801	DTC323TK-X	DIGI. TRANSISTOR		
Q1802	DTC323TK-X	DIGI. TRANSISTOR		
Q1803	2SB709A/QR/-X	TRANSISTOR		
Q1804	2SC1740S/QR/-T	TRANSISTOR		
Q1860	2SD601A/QR/-X	TRANSISTOR		
Q1861	2SB709A/QR/-X	TRANSISTOR		
Q1862	2SB709A/QR/-X	TRANSISTOR		
Q1952	2SD601A/QR/-X	TRANSISTOR		
Q1953	2SD601A/QR/-X	TRANSISTOR		
Q1954	2SD601A/QR/-X	TRANSISTOR		

△ Symbol No.	Part No.	Part Name	Description	Local
IC				
IC1401	AN5522	I.C(MONO-ANA)		
IC1480	UPC358G2-XE	I.C(MONOLITHIC)		
IC1601	MSP3417G-X	I.C(MONO-ANA)		
IC1602	NJW1138M-X	I.C(MONO-ANA)		
IC1650	AN5277	I.C(MONO-ANA)		
IC1701	TDA9365N23S0873	I.C(MICRO-COMP)		
IC1702	AT24C08-21WS3	I.C(MEMORY-OTH)	(SERVICE)	
IC1760	GP1UM281QK	IR DETECT UNIT		
IC1801	MM1492AF	I.C(MONO-ANA)		
IC1901	STR-F6709A/F7	I.C(HYBRID)		
IC1951	SE135N	I.C(HYBRID)		
IC1972	R1141Q331B-X	REGULATE		
IC1974	AN80T36	REG IC		

OTHERS

	LC30114-001C-H	LED HOLDER		
	CM35921-005-H	CDS HOLDER		
	QAX0639-001Z	C TRAP		
	QZW0027-002	WIRE CLAMP		
	QZW0027-004	WIRE CLAMP		
	QZW0027-004	WIRE CLAMP		
△ CP1951	ICP-N75-Y	IC PROTECTOR		
△ CP1952	ICP-N50-Y	IC PROTECTOR		
△ CP1953	ICP-N75-Y	IC PROTECTOR		
△ F1901	QMF51E2-4R0J4	FUSE		
FC1901	CEMG002-001Z	FUSE CLIP		
J1770	QNS0155-001	3.5 JACK		
J1771	QNN0282-003	PIN JACK		
J1772	QNN0282-002	PIN JACK		
J1773	QNN0282-001	PIN JACK		
J1801	QNN0349-001	PIN JACK		
J1802	QNN0349-002	PIN JACK		
J1803	QNN0348-001	PIN JACK		
J1804	QNN0349-001	PIN JACK		
K1103	QQR1113-001Z	FERRITE BEADS		
K1104	QQR1113-001Z	FERRITE BEADS		
K1106	QQR1113-001Z	FERRITE BEADS		
K1701	QQR1113-001Z	FERRITE BEADS		
K1901	QQR1113-001Z	FERRITE BEADS		
K1902	QQR1114-001Z	FERRITE BEADS		
K1903	QQR1114-001Z	FERRITE BEADS		
K1951	QQR1113-001Z	FERRITE BEADS		
K1953	QQR1113-001Z	FERRITE BEADS		
K1954	QQR1113-001Z	FERRITE BEADS		
K1955	QQR1214-001Y	FERRITE BEADS		
△ LF1901	QQR0673-004	LINE FILTER		
△ LF1902	QQR1035-002	LINE FILTER		
△ PC1901	PC123F2	IC(PHOTO COUPLE)		
△ RY1901	QSK0092-001	RELAY		
S1780	QSW0619-003Z	TACT SWITCH	MENU	
S1781	QSW0619-003Z	TACT SWITCH	CH-	
S1782	QSW0619-003Z	TACT SWITCH	CH+	
S1783	QSW0619-003Z	TACT SWITCH	VOL-	
S1784	QSW0619-003Z	TACT SWITCH	VOL+	
△ S1901	QSW0846-001	PUSH SWITCH	POWER	
SF1101	QAX0663-001	SAW FILTER		
SF1102	QAX0731-001	SAW FILTER		
△ SK1351	QNZ0537-001	CRT SOCKET		
TH1901	QAD0134-4R5	P THERMISTOR		
TU1001	QAU0185-005	TUNER		
△ VA1901	QAF0052-621	VARISTOR		
W1008	NRSA63J-0R0X	MG R	0.0Ω 1/16W	J
W1010	NRSA63J-0R0X	MG R	0.0Ω 1/16W	J
W1052	NRSA63J-0R0X	MG R	0.0Ω 1/16W	J
W1071	NRSA63J-0R0X	MG R	0.0Ω 1/16W	J
W1096	NRSA63J-0R0X	MG R	0.0Ω 1/16W	J
W1239	NRSA63J-0R0X	MG R	0.0Ω 1/16W	J
W1257	NRSA63J-0R0X	MG R	0.0Ω 1/16W	J
W1307	NRSA63J-0R0X	MG R	0.0Ω 1/16W	J
W1309	NRSA63J-0R0X	MG R	0.0Ω 1/16W	J
W1317	NRSA63J-0R0X	MG R	0.0Ω 1/16W	J

△ Symbol No.	Part No.	Part Name	Description	Local	△ Symbol No.	Part No.	Part Name	Description	Local
OTHERS									
W1322	NRSA63J-0R0X	MG R	0.0Ω 1/16W	J					
W1325	NRSA63J-0R0X	MG R	0.0Ω 1/16W	J					
W1326	NRSA63J-0R0X	MG R	0.0Ω 1/16W	J					
W1330	NRSA63J-0R0X	MG R	0.0Ω 1/16W	J					
W1333	NRSA63J-0R0X	MG R	0.0Ω 1/16W	J					
W1375	NRSA63J-0R0X	MG R	0.0Ω 1/16W	J					
W1379	NRSA63J-0R0X	MG R	0.0Ω 1/16W	J					
W1388	NRSA63J-0R0X	MG R	0.0Ω 1/16W	J					
W1417	NRSA63J-0R0X	MG R	0.0Ω 1/16W	J					
W1418	NRSA63J-0R0X	MG R	0.0Ω 1/16W	J					
W1430	NRSA63J-0R0X	MG R	0.0Ω 1/16W	J					
X1601	CE42546-001Z	XTAL							
X1701	QAX0737-001	CRYSTAL							
Y1004	NRSA63J-0R0X	MG R	0.0Ω 1/16W	J					
Y1005	NRSA63J-0R0X	MG R	0.0Ω 1/16W	J					
Y1301	NRSA63J-0R0X	MG R	0.0Ω 1/16W	J					
Y1604	NRSA63J-0R0X	MG R	0.0Ω 1/16W	J					

DIFFERENCE PARTS LIST BETWEEN AV-25LS3, AV-25LS3/AU AND AV-25LH3

In the DIFFERENCE PARTS LIST BETWEEN AV-25LS3, AV-25LS3/AU and AV-25LH3, only difference points between these models are written. For other parts not mentioned in the list, please refer to the PARTS LIST(P44 – P49) for the AV-25LS3.

DIFFERENCE PARTS LIST

△	Symbol No.	Part No.			Part Name
		AV-25LS3	AV-25LS3/AU	AV-25LH3	
		SCH-1080A-H2	SCH-1086A-H2	SCH-1096A-H2	MAIN PWB
	IC1701	TDA9365N23S0873	←	TDA9386N22S0866	IC
	R1801	—	NRSA63J-750X (75Ω, 1/16W, J)	←	MG R
	R1802	—	NRSA63J-750X (75Ω, 1/16W, J)	←	MG R
	R1817	—	NRSA63J-101X (100Ω, 1/16W, J)	←	MG R
	R1819	—	NRSA63J-101X (100Ω, 1/16W, J)	←	MG R
	C1806	—	QFLC1HJ-104Z (0.1μF, 50V, J)	←	M CAP.
	C1809	—	NCB31HK-103X (0.01μF, 50V, K)	←	C CAP.
	J1801	QNN0349-001	QNZ0454-001	←	PIN JACK

PRINTED WIRING BOARD PARTS LIST [AV-25LX3]

MAIN PW BOARD ASS'Y(SCH-1087A-H2)

△	Symbol No.	Part No.	Part Name	Description	Local	△	Symbol No.	Part No.	Part Name	Description	Local
RESISTOR						RESISTOR					
	R1001	NRSA63J-221X	MG R	220Ω 1/16W J			R1377	NRSA63J-330X	MG R	33Ω 1/16W J	
	R1002	NRSA63J-221X	MG R	220Ω 1/16W J			R1378	NRSA63J-223X	MG R	22kΩ 1/16W J	
	R1003	NRSA63J-392X	MG R	3.9kΩ 1/16W J			R1379	NRSA63J-103X	MG R	10kΩ 1/16W J	
	R1004	NRSA63J-221X	MG R	220Ω 1/16W J			R1383	QRE121J-394Y	C R	390kΩ 1/2W J	
	R1006	NRSA63J-273X	MG R	27kΩ 1/16W J			R1384	NRSA63J-103X	MG R	10kΩ 1/16W J	
	R1007	NRSA63J-750X	MG R	75Ω 1/16W J			R1385	QRE141J-393Y	C R	39kΩ 1/4W J	
	R1101	NRSA63J-100X	MG R	10Ω 1/16W J			R1401	NRSA63J-224X	MG R	220kΩ 1/16W J	
	R1102	NRSA63J-682X	MG R	6.8kΩ 1/16W J			R1403	NRSA63J-0R0X	MG R	0.0Ω 1/16W J	
	R1103	NRSA63J-272X	MG R	2.7kΩ 1/16W J			R1405	NRSA63J-682X	MG R	6.8kΩ 1/16W J	
	R1104	NRSA63J-181X	MG R	180Ω 1/16W J			R1406	NRSA63J-123X	MG R	12kΩ 1/16W J	
	R1105	NRSA63J-220X	MG R	22Ω 1/16W J			R1408	NRSA63J-682X	MG R	6.8kΩ 1/16W J	
	R1106	NRSA63J-101X	MG R	100Ω 1/16W J			R1410	NRSA63J-123X	MG R	12kΩ 1/16W J	
	R1107	NRSA63J-472X	MG R	4.7kΩ 1/16W J			R1411	QRG01GJ-221	OM R	220Ω 1W J	
	R1108	NRSA63J-222X	MG R	2.2kΩ 1/16W J			R1412	QRE121J-1R0Y	C R	1Ω 1/2W J	
	R1109	NRSA63J-222X	MG R	2.2kΩ 1/16W J			R1413	QRX01GJ-2R7	MF R	2.7Ω 1W J	
	R1111	NRSA63J-102X	MG R	1kΩ 1/16W J			R1414	QRE121J-8R2Y	C R	8.2Ω 1/2W J	
	R1112	NRSA63J-103X	MG R	10kΩ 1/16W J			R1425	NRSA63J-683X	MG R	68kΩ 1/16W J	
	R1117	NRSA63J-102X	MG R	1kΩ 1/16W J			R1480	QRE121J-681Y	C R	680Ω 1/2W J	
	R1119	NRSA63J-102X	MG R	1kΩ 1/16W J			R1481	NRSA63J-223X	MG R	22kΩ 1/16W J	
	R1120	NRSA63J-471X	MG R	470Ω 1/16W J			R1482	NRSA63J-562X	MG R	5.6kΩ 1/16W J	
	R1130	NRSA63J-472X	MG R	4.7kΩ 1/16W J			R1483	NRSA63J-823X	MG R	82kΩ 1/16W J	
	R1131	NRSA63J-471X	MG R	470Ω 1/16W J			R1484	NRSA63J-562X	MG R	5.6kΩ 1/16W J	
	R1132	NRSA63J-222X	MG R	2.2kΩ 1/16W J			R1485	NRSA63J-562X	MG R	5.6kΩ 1/16W J	
	R1133	NRSA63J-152X	MG R	1.5kΩ 1/16W J			R1486	NRSA63J-272X	MG R	2.7kΩ 1/16W J	
	R1134	NRSA63J-182X	MG R	1.8kΩ 1/16W J			R1487	NRSA63J-333X	MG R	33kΩ 1/16W J	
	R1135	NRSA63J-561X	MG R	560Ω 1/16W J			R1489	NRSA63J-122X	MG R	1.2kΩ 1/16W J	
	R1136	NRSA63J-472X	MG R	4.7kΩ 1/16W J			R1490	NRSA63J-102X	MG R	1kΩ 1/16W J	
	R1137	NRSA63J-103X	MG R	10kΩ 1/16W J			R1491	NRSA63J-562X	MG R	5.6kΩ 1/16W J	
	R1138	NRSA63J-471X	MG R	470Ω 1/16W J			R1492	NRSA63J-822X	MG R	8.2kΩ 1/16W J	
	R1139	NRSA63J-222X	MG R	2.2kΩ 1/16W J			R1493	QRE121J-333Y	C R	33kΩ 1/2W J	
	R1140	NRSA63J-152X	MG R	1.5kΩ 1/16W J			R1494	QRL039J-470	OM R	47Ω 3W J	
	R1141	NRSA63J-182X	MG R	1.8kΩ 1/16W J			R1521	NRSA63J-101X	MG R	100Ω 1/16W J	
	R1142	NRSA63J-561X	MG R	560Ω 1/16W J			R1522	NRSA63J-102X	MG R	1kΩ 1/16W J	
	R1143	NRSA63J-471X	MG R	470Ω 1/16W J			R1524	QRL039J-560	OM R	56Ω 3W J	
	R1144	NRSA63J-220X	MG R	22Ω 1/16W J			R1526	QRL029J-271	OM R	270Ω 2W J	
	R1145	NRSA63J-821X	MG R	820Ω 1/16W J			R1527	QRL039J-103	OM R	10kΩ 3W J	
	R1146	NRSA63J-103X	MG R	10kΩ 1/16W J			R1528	QRX029J-R47	MF R	0.47Ω 2W J	
	R1147	NRSA63J-101X	MG R	100Ω 1/16W J			R1529	QRX029J-R47	MF R	0.47Ω 2W J	
	R1148	NRSA63J-332X	MG R	3.3kΩ 1/16W J			R1531	NRSA63J-222X	MG R	2.2kΩ 1/16W J	
	R1149	NRSA63J-471X	MG R	470Ω 1/16W J		△	R1532	QRZ9017-4R7	F R	4.7Ω 1/4W J	
	R1155	NRSA63J-471X	MG R	470Ω 1/16W J			R1540	QRL039J-470	OM R	47Ω 3W J	
	R1301	NRSA63J-222X	MG R	2.2kΩ 1/16W J			R1541	QRE121J-124Y	C R	120kΩ 1/2W J	
	R1302	NRSA63J-222X	MG R	2.2kΩ 1/16W J			R1542	QRE121J-124Y	C R	120kΩ 1/2W J	
	R1303	NRSA63J-562X	MG R	5.6kΩ 1/16W J			R1543	QRE121J-471Y	C R	470Ω 1/2W J	
	R1304	NRSA63J-222X	MG R	2.2kΩ 1/16W J			R1545	QRE121J-220Y	C R	22Ω 1/2W J	
	R1305	NRSA63J-222X	MG R	2.2kΩ 1/16W J			R1546	QRE121J-822Y	C R	8.2kΩ 1/2W J	
	R1306	NRSA63J-562X	MG R	5.6kΩ 1/16W J			R1591	QRE121J-472Y	C R	4.7kΩ 1/2W J	
	R1351	NRSA63J-151X	MG R	150Ω 1/16W J			R1592	QRZ0221-3R9	OM R	3.9Ω 2W J	
	R1352	QRL029J-123	OM R	12kΩ 2W J			R1593	NRSA63J-821X	MG R	820Ω 1/16W J	
	R1353	NRSA63J-182X	MG R	1.8kΩ 1/16W J			R1594	QRE121J-183Y	C R	18kΩ 1/2W J	
	R1354	NRSA63J-331X	MG R	330Ω 1/16W J			R1595	NRSA63J-222X	MG R	2.2kΩ 1/16W J	
	R1355	NRSA63J-101X	MG R	100Ω 1/16W J			R1621	NRSA63J-0R0X	MG R	0.0Ω 1/16W J	
	R1356	QRE121J-102Y	C R	1kΩ 1/2W J			R1622	NRSA63J-0R0X	MG R	0.0Ω 1/16W J	
	R1357	QRZ0107-152Z	C R	1.5kΩ 1W K			R1624	NRSA63J-101X	MG R	100Ω 1/16W J	
	R1358	QRE121J-272Y	C R	2.7kΩ 1/2W J			R1625	NRSA63J-101X	MG R	100Ω 1/16W J	
	R1359	QRE121J-561Y	C R	560Ω 1/2W J			R1626	NRSA63J-102X	MG R	1kΩ 1/16W J	
	R1361	NRSA63J-151X	MG R	150Ω 1/16W J			R1627	NRSA63J-102X	MG R	1kΩ 1/16W J	
	R1362	QRL029J-123	OM R	12kΩ 2W J			R1650	NRSA63J-103X	MG R	10kΩ 1/16W J	
	R1363	NRSA63J-182X	MG R	1.8kΩ 1/16W J			R1651	NRSA63J-822X	MG R	8.2kΩ 1/16W J	
	R1364	NRSA63J-331X	MG R	330Ω 1/16W J			R1654	NRSA63J-103X	MG R	10kΩ 1/16W J	
	R1365	NRSA63J-101X	MG R	100Ω 1/16W J			R1655	NRSA63J-822X	MG R	8.2kΩ 1/16W J	
	R1366	QRE121J-102Y	C R	1kΩ 1/2W J			R1658	QRE121J-2R2Y	C R	2.2Ω 1/2W J	
	R1367	QRZ0107-152Z	C R	1.5kΩ 1W K			R1659	QRE121J-2R2Y	C R	2.2Ω 1/2W J	
	R1368	NRSA63J-332X	MG R	3.3kΩ 1/16W J			R1660	NRSA63J-103X	MG R	10kΩ 1/16W J	
△	R1369	QRZ9017-150	F R	15Ω 1/4W J			R1661	NRSA63J-683X	MG R	68kΩ 1/16W J	
	R1370	NRSA63J-151X	MG R	150Ω 1/16W J			R1662	NRSA63J-333X	MG R	33kΩ 1/16W J	
	R1371	QRL029J-123	OM R	12kΩ 2W J			R1663	NRSA63J-103X	MG R	10kΩ 1/16W J	
	R1372	NRSA63J-182X	MG R	1.8kΩ 1/16W J			R1664	NRSA63J-222X	MG R	2.2kΩ 1/16W J	
	R1373	NRSA63J-331X	MG R	330Ω 1/16W J			R1686	NRSA63J-102X	MG R	1kΩ 1/16W J	
	R1374	NRSA63J-101X	MG R	100Ω 1/16W J			R1687	NRSA63J-103X	MG R	10kΩ 1/16W J	
	R1375	QRE121J-102Y	C R	1kΩ 1/2W J			R1688	NRSA63J-273X	MG R	27kΩ 1/16W J	
	R1376	QRZ0107-152Z	C R	1.5kΩ 1W K			R1690	NRSA63J-104X	MG R	100kΩ 1/16W J	

△ Symbol No.	Part No.	Part Name	Description	Local
RESISTOR				
R1698	NRSA63J-104X	MG R	100kΩ 1/16W J	
R1699	NRSA63J-104X	MG R	100kΩ 1/16W J	
R1701	NRSA63J-101X	MG R	100Ω 1/16W J	
R1702	NRSA63J-101X	MG R	100Ω 1/16W J	
R1703	NRSA63J-101X	MG R	100Ω 1/16W J	
R1704	NRSA63J-102X	MG R	1kΩ 1/16W J	
R1705	NRSA63J-102X	MG R	1kΩ 1/16W J	
R1706	NRSA63J-102X	MG R	1kΩ 1/16W J	
R1707	NRSA63J-472X	MG R	4.7kΩ 1/16W J	
R1708	NRSA63J-472X	MG R	4.7kΩ 1/16W J	
R1709	NRSA63J-472X	MG R	4.7kΩ 1/16W J	
R1710	NRSA63J-472X	MG R	4.7kΩ 1/16W J	
R1711	NRSA63J-101X	MG R	100Ω 1/16W J	
R1712	NRSA63J-101X	MG R	100Ω 1/16W J	
R1713	NRSA63J-101X	MG R	100Ω 1/16W J	
R1714	NRSA63J-101X	MG R	100Ω 1/16W J	
R1715	NRSA63J-103X	MG R	10kΩ 1/16W J	
R1716	NRSA63J-103X	MG R	10kΩ 1/16W J	
R1717	NRSA63J-103X	MG R	10kΩ 1/16W J	
R1718	NRSA63J-221X	MG R	220Ω 1/16W J	
R1719	NRSA63J-221X	MG R	220Ω 1/16W J	
R1720	NRSA63J-102X	MG R	1kΩ 1/16W J	
R1721	NRSA63J-221X	MG R	220Ω 1/16W J	
R1722	NRSA63J-221X	MG R	220Ω 1/16W J	
R1723	NRSA63J-221X	MG R	220Ω 1/16W J	
R1724	NRSA63J-221X	MG R	220Ω 1/16W J	
R1725	NRSA63J-103X	MG R	10kΩ 1/16W J	
R1726	NRSA63J-472X	MG R	4.7kΩ 1/16W J	
R1727	NRSA63J-104X	MG R	100kΩ 1/16W J	
R1728	NRSA63J-103X	MG R	10kΩ 1/16W J	
R1729	NRSA63J-470X	MG R	47Ω 1/16W J	
R1730	NRSA63J-223X	MG R	22kΩ 1/16W J	
R1731	NRSA63J-101X	MG R	100Ω 1/16W J	
R1732	NRSA02F-393X	MG R	39kΩ 1/10W F	
R1733	NRSA63J-273X	MG R	27kΩ 1/16W J	
R1734	NRSA63J-391X	MG R	390Ω 1/16W J	
R1735	NRSA63J-104X	MG R	100kΩ 1/16W J	
R1736	NRSA63J-333X	MG R	33kΩ 1/16W J	
R1737	NRSA63J-272X	MG R	2.7kΩ 1/16W J	
R1738	NRSA63J-0R0X	MG R	0.0Ω 1/16W J	
R1739	NRSA63J-101X	MG R	100Ω 1/16W J	
R1740	NRSA63J-101X	MG R	100Ω 1/16W J	
R1741	NRSA63J-101X	MG R	100Ω 1/16W J	
R1742	NRSA63J-0R0X	MG R	0.0Ω 1/16W J	
R1743	NRSA63J-681X	MG R	680Ω 1/16W J	
R1744	NRSA63J-561X	MG R	560Ω 1/16W J	
R1745	NRSA63J-105X	MG R	1MΩ 1/16W J	
R1746	NRSA63J-333X	MG R	33kΩ 1/16W J	
R1747	NRSA63J-103X	MG R	10kΩ 1/16W J	
R1748	NRSA02J-475X	MG R	4.7MΩ 1/10W J	
R1749	NRSA02J-475X	MG R	4.7MΩ 1/10W J	
R1750	NRSA63J-0R0X	MG R	0.0Ω 1/16W J	
R1755	NRSA63J-101X	MG R	100Ω 1/16W J	
R1756	NRSA63J-101X	MG R	100Ω 1/16W J	
R1757	NRSA63J-222X	MG R	2.2kΩ 1/16W J	
R1758	NRSA63J-222X	MG R	2.2kΩ 1/16W J	
R1760	NRSA63J-682X	MG R	6.8kΩ 1/16W J	
R1770	QRE121J-271Y	C R	270Ω 1/2W J	
R1771	NRSA63J-102X	MG R	1kΩ 1/16W J	
R1772	QRE121J-271Y	C R	270Ω 1/2W J	
R1773	NRSA63J-102X	MG R	1kΩ 1/16W J	
R1775	NRSA63J-332X	MG R	3.3kΩ 1/16W J	
R1776	NRSA63J-392X	MG R	3.9kΩ 1/16W J	
R1777	NRSA63J-682X	MG R	6.8kΩ 1/16W J	
R1779	NRSA63J-272X	MG R	2.7kΩ 1/16W J	
R1780	NRSA63J-471X	MG R	470Ω 1/16W J	
R1781	NRSA63J-122X	MG R	1.2kΩ 1/16W J	
R1782	NRSA63J-181X	MG R	180Ω 1/16W J	
R1783	NRSA63J-221X	MG R	220Ω 1/16W J	
R1784	NRSA63J-331X	MG R	330Ω 1/16W J	
R1785	NRSA63J-471X	MG R	470Ω 1/16W J	
R1803	NRSA63J-333X	MG R	33kΩ 1/16W J	

△ Symbol No.	Part No.	Part Name	Description	Local
RESISTOR				
R1804	NRSA63J-750X	MG R	75Ω 1/16W J	
R1805	NRSA63J-750X	MG R	75Ω 1/16W J	
R1806	NRSA63J-750X	MG R	75Ω 1/16W J	
R1807	NRSA63J-750X	MG R	75Ω 1/16W J	
R1808	NRSA63J-823X	MG R	82kΩ 1/16W J	
R1809	NRSA63J-391X	MG R	390Ω 1/16W J	
R1810	NRSA63J-823X	MG R	82kΩ 1/16W J	
R1811	NRSA63J-391X	MG R	390Ω 1/16W J	
R1812	NRSA63J-104X	MG R	100kΩ 1/16W J	
R1813	NRSA63J-222X	MG R	2.2kΩ 1/16W J	
R1815	NRSA63J-101X	MG R	100Ω 1/16W J	
R1818	NRSA63J-222X	MG R	2.2kΩ 1/16W J	
R1820	NRSA63J-101X	MG R	100Ω 1/16W J	
R1821	NRSA63J-222X	MG R	2.2kΩ 1/16W J	
R1823	NRSA63J-101X	MG R	100Ω 1/16W J	
R1824	NRSA63J-222X	MG R	2.2kΩ 1/16W J	
R1826	NRSA63J-101X	MG R	100Ω 1/16W J	
R1829	NRSA63J-750X	MG R	75Ω 1/16W J	
R1830	NRSA63J-222X	MG R	2.2kΩ 1/16W J	
R1831	NRSA63J-222X	MG R	2.2kΩ 1/16W J	
R1832	NRSA63J-122X	MG R	1.2kΩ 1/16W J	
R1833	NRSA63J-102X	MG R	1kΩ 1/16W J	
R1834	NRSA63J-562X	MG R	5.6kΩ 1/16W J	
R1835	NRSA63J-562X	MG R	5.6kΩ 1/16W J	
R1836	NRSA63J-750X	MG R	75Ω 1/16W J	
R1837	NRSA63J-101X	MG R	100Ω 1/16W J	
R1838	QRK126J-121X	UNF R	120Ω 1/2W J	
R1839	QRE121J-221Y	C R	220Ω 1/2W J	
R1840	QRE121J-221Y	C R	220Ω 1/2W J	
R1841	NRSA63J-0R0X	MG R	0.0Ω 1/16W J	
R1842	NRSA63J-0R0X	MG R	0.0Ω 1/16W J	
R1843	NRSA63J-821X	MG R	820Ω 1/16W J	
R1844	NRSA63J-222X	MG R	2.2kΩ 1/16W J	
R1845	NRSA63J-102X	MG R	1kΩ 1/16W J	
R1846	NRSA63J-222X	MG R	2.2kΩ 1/16W J	
R1847	NRSA63J-103X	MG R	10kΩ 1/16W J	
R1848	NRSA63J-471X	MG R	470Ω 1/16W J	
R1849	NRSA63J-221X	MG R	220Ω 1/16W J	
R1880	NRSA63J-202X	MG R	2kΩ 1/16W J	
R1881	NRSA63J-103X	MG R	10kΩ 1/16W J	
R1882	NRSA63J-471X	MG R	470Ω 1/16W J	
R1883	NRSA63J-181X	MG R	180Ω 1/16W J	
R1902	QRF154K-2R2	UNF R	2.2Ω 15W K	
R1904	QRE121J-681Y	C R	680Ω 1/2W J	
R1905	QRM034J-R15	MP R	0.15Ω 3W J	
R1907	NRSA63J-563X	MG R	56kΩ 1/16W J	
R1908	QRL039J-333	OM R	33kΩ 3W J	
R1909	QRE121J-474Y	C R	470kΩ 1/2W J	
R1910	QRE121J-472Y	C R	4.7kΩ 1/2W J	
R1911	QRE121J-332Y	C R	3.3kΩ 1/2W J	
R1912	NRSA63J-152X	MG R	1.5kΩ 1/16W J	
△ R1915	QRZ0111-474	C R	470kΩ 1W K	
R1952	NRSA63J-332X	MG R	3.3kΩ 1/16W J	
R1953	NRSA63J-101X	MG R	100Ω 1/16W J	
R1957	QRE121J-6R8Y	C R	6.8Ω 1/2W J	
R1960	NRSA63J-391X	MG R	390Ω 1/16W J	
R1961	QRL029J-223	OM R	22kΩ 2W J	
R1962	NRSA63J-561X	MG R	560Ω 1/16W J	
R1963	QRE121J-103Y	C R	10kΩ 1/2W J	
R1964	NRSA63J-473X	MG R	47kΩ 1/16W J	
R1965	NRSA63J-0R0X	MG R	0.0Ω 1/16W J	
R1966	NRSA63J-682X	MG R	6.8kΩ 1/16W J	
R1967	NRSA63J-473X	MG R	47kΩ 1/16W J	
R1970	NRSA63J-153X	MG R	15kΩ 1/16W J	
R1971	NRSA63J-183X	MG R	18kΩ 1/16W J	
R1972	NRSA63J-391X	MG R	390Ω 1/16W J	
△ R1991	QRZ9046-825Z	C R	8.2MΩ 1W J	

△ Symbol No.	Part No.	Part Name	Description	Local	△ Symbol No.	Part No.	Part Name	Description	Local
CAPACITOR					CAPACITOR				
C1001	NCB31HK-103X	C CAP.	0.01μF 50V	K	C1541	QETN2EM-226Z	E CAP.	22μF 250V	M
C1002	QETN1HM-106Z	E CAP.	10μF 50V	M	C1542	QETN2EM-226Z	E CAP.	22μF 250V	M
C1003	QFV71HJ-104Z	MF CAP.	0.1μF 50V	J	C1550	NCB31CK-104X	C CAP.	0.1μF 16V	K
C1004	QETN1CM-477Z	E CAP.	470pF 16V	M	C1591	QETN1AM-107Z	E CAP.	100μF 10V	M
C1005	NCB31HK-222X	C CAP.	2200pF 50V	K	C1592	QETM2CM-227	E CAP.	220μF 160V	M
C1006	QETN1CM-336Z	E CAP.	33μF 16V	M	C1593	QETN1EM-476Z	E CAP.	47μF 25V	M
C1007	NCB31HK-103X	C CAP.	0.01μF 50V	K	C1625	QETN1HM-475Z	E CAP.	4.7μF 50V	M
C1101	NCB31HK-472X	C CAP.	4700pF 50V	K	C1626	QETN1HM-475Z	E CAP.	4.7μF 50V	M
C1102	NCB31HK-472X	C CAP.	4700pF 50V	K	C1628	NCB31HK-472X	C CAP.	4700pF 50V	K
C1103	NCB31HK-472X	C CAP.	4700pF 50V	K	C1629	NCB31EK-104X	C CAP.	0.1μF 25V	K
C1104	NCB31HK-472X	C CAP.	4700pF 50V	K	C1630	QETN1HM-475Z	E CAP.	4.7μF 50V	M
C1105	NCB31HK-472X	C CAP.	4700pF 50V	K	C1631	NCB31EK-104X	C CAP.	0.1μF 25V	K
C1106	NDC21HJ-180X	C CAP.	18pF 50V	J	C1632	QETN1HM-475Z	E CAP.	4.7μF 50V	M
C1107	NCB31HK-103X	C CAP.	0.01μF 50V	K	C1633	QETN1HM-475Z	E CAP.	4.7μF 50V	M
C1109	QETN1HM-106Z	E CAP.	10μF 50V	M	C1634	QETN1HM-475Z	E CAP.	4.7μF 50V	M
C1130	NCB31HK-103X	C CAP.	0.01μF 50V	K	C1635	QETN1HM-107Z	E CAP.	100μF 50V	M
C1131	NCB31HK-103X	C CAP.	0.01μF 50V	K	C1636	QETN1HM-475Z	E CAP.	4.7μF 50V	M
C1132	NCB31HK-103X	C CAP.	0.01μF 50V	K	C1637	QETN1HM-475Z	E CAP.	4.7μF 50V	M
C1133	QETN1CM-107Z	E CAP.	100μF 16V	M	C1638	NCB31EK-104X	C CAP.	0.1μF 25V	K
C1134	NCB31HK-103X	C CAP.	0.01μF 50V	K	C1639	NCF21CZ-105X	C CAP.	1μF 16V	Z
C1135	QETN1AM-477Z	E CAP.	470pF 10V	M	C1640	QETN1HM-475Z	E CAP.	4.7μF 50V	M
C1136	NCB31HK-103X	C CAP.	0.01μF 50V	K	C1641	NCB31EK-104X	C CAP.	0.1μF 25V	K
C1137	NCB31HK-103X	C CAP.	0.01μF 50V	K	C1642	NCB31HK-472X	C CAP.	4700pF 50V	K
C1138	NCB31HK-103X	C CAP.	0.01μF 50V	K	C1644	QETN1HM-475Z	E CAP.	4.7μF 50V	M
C1139	NCB31HK-103X	C CAP.	0.01μF 50V	K	C1645	QETN1HM-475Z	E CAP.	4.7μF 50V	M
C1140	NCB31HK-103X	C CAP.	0.01μF 50V	K	C1650	QEH1HM-106Z	E CAP.	10μF 50V	M
C1141	NCB31HK-103X	C CAP.	0.01μF 50V	K	C1651	QEH1VM-476Z	E CAP.	47μF 35V	M
C1142	NCB31HK-103X	C CAP.	0.01μF 50V	K	C1652	QETN1HM-106Z	E CAP.	10μF 50V	M
C1143	QETN1HM-106Z	E CAP.	10μF 50V	M	C1655	QEHQ1VM-108	E CAP.	1000μF 35V	M
C1144	NCB31HK-223X	C CAP.	0.022μF 50V	K	C1656	QEHQ1VM-108	E CAP.	1000μF 35V	M
C1308	NCB31HK-103X	C CAP.	0.01μF 50V	K	C1659	NCF21HZ-224X	C CAP.	0.22μF 50V	Z
C1310	NRSA63J-0R0X	MG R	0.0Ω 1/16W	J	C1660	NCF21HZ-224X	C CAP.	0.22μF 50V	Z
C1350	NDC21HJ-471X	C CAP.	470pF 50V	J	C1661	NCF21HZ-224X	C CAP.	0.22μF 50V	Z
C1351	NDC31HJ-561X	C CAP.	560pF 50V	J	C1662	QEH1VM-227Z	E CAP.	220μF 35V	M
C1352	QETN2EM-475Z	E CAP.	4.7μF 250V	M	C1663	NCF21HZ-224X	C CAP.	0.22μF 50V	Z
C1353	QETN1HM-107Z	E CAP.	100μF 50V	M	C1681	QETN1CM-227Z	E CAP.	220μF 16V	M
C1354	QETN1HM-105Z	E CAP.	1μF 50V	M	C1682	QETN1CM-227Z	E CAP.	220μF 16V	M
C1360	NDC21HJ-471X	C CAP.	470pF 50V	J	C1683	QETN1CM-336Z	E CAP.	33μF 16V	M
C1361	NDC31HJ-561X	C CAP.	560pF 50V	J	C1684	QETN1HM-106Z	E CAP.	10μF 50V	M
C1370	NDC21HJ-471X	C CAP.	470pF 50V	J	C1685	NRSA63J-0R0X	MG R	0.0Ω 1/16W	J
C1371	NDC31HJ-681X	C CAP.	680pF 50V	J	C1686	NRSA63J-0R0X	MG R	0.0Ω 1/16W	J
C1372	NRSA63J-273X	MG R	27kΩ 1/16W	J	C1701	QETN1CM-227Z	E CAP.	220μF 16V	M
C1374	QCZ0364-222	C CAP.	2200pF 50V	M	C1702	QETN1HM-106Z	E CAP.	10μF 50V	M
C1375	QETN1CM-477Z	E CAP.	470pF 16V	M	C1703	NDC31HJ-330X	C CAP.	33pF 50V	J
C1401	QETN1HM-105Z	E CAP.	1μF 50V	M	C1704	NDC31HJ-330X	C CAP.	33pF 50V	J
C1402	QCB31HK-682Z	C CAP.	6800pF 50V	K	C1705	NCB31HK-102X	C CAP.	1000pF 50V	K
C1403	QEH1VM-227Z	E CAP.	220μF 35V	M	C1706	NCB21EK-224X	C CAP.	0.22μF 25V	K
C1406	QFLC2AJ-683Z	M CAP.	0.068μF 100V	J	C1707	QETN1CM-107Z	E CAP.	100μF 16V	M
C1407	QCS32HJ-180Z	C CAP.	18pF 500V	J	C1709	QETN1CM-107Z	E CAP.	100μF 16V	M
C1408	QFV71HJ-184Z	MF CAP.	0.18μF 50V	J	C1710	NCB21EK-224X	C CAP.	0.22μF 25V	K
C1411	NCF21HZ-334X	C CAP.	0.33μF 50V	Z	C1711	NCB31CK-104X	C CAP.	0.1μF 16V	K
C1412	NCF21HZ-334X	C CAP.	0.33μF 50V	Z	C1713	NCB31CK-104X	C CAP.	0.1μF 16V	K
C1413	QFLC2AJ-563Z	M CAP.	0.056μF 100V	J	C1714	QETN1CM-476Z	E CAP.	47μF 16V	M
C1422	QEHQ1VM-108	E CAP.	1000μF 35V	M	C1720	QETN1CM-476Z	E CAP.	47μF 16V	M
C1480	QETN1HM-106Z	E CAP.	10μF 50V	M	C1725	NCB31HK-681X	C CAP.	680pF 50V	K
C1483	QEZ0195-475Z	BP E CAP.	4.7μF 50V	M	C1730	NCB21EK-224X	C CAP.	0.22μF 25V	K
C1485	QETN1HM-226Z	E CAP.	22μF 50V	M	C1731	NCB21EK-224X	C CAP.	0.22μF 25V	K
C1521	QETN1VM-476Z	E CAP.	47μF 35V	M	C1732	QETN1CM-107Z	E CAP.	100μF 16V	M
C1522	QFLC1HJ-332Z	M CAP.	3300pF 50V	J	C1733	NCB31CK-104X	C CAP.	0.1μF 16V	K
C1523	QFLC1HJ-223Z	M CAP.	0.022μF 50V	J	C1734	NCB31HK-222X	C CAP.	2200pF 50V	K
C1524	QFZ0200-452	MPP CAP.	4500pF 1.5kVH±3%	J	C1735	NCB31HK-222X	C CAP.	2200pF 50V	K
C1525	QFZ0200-113	MPP CAP.	0.011μF 1.5kVH±3%	J	C1736	QETN1HM-105Z	E CAP.	1μF 50V	M
C1526	QFP32GJ-183	PP CAP.	0.018μF 400V	J	C1737	QETN1HM-105Z	E CAP.	1μF 50V	M
C1527	QFZ0199-154	MPP CAP.	0.15μF AC250V	J	C1738	NCB31CK-104X	C CAP.	0.1μF 16V	K
C1528	QFZ0199-224	MPP CAP.	0.22μF AC250V	J	C1739	NFV41CJ-104X	MPP CAP.	0.1μF 16V	J
C1529	QENC2AM-225Z	BP E CAP.	2.2μF 100V	M	C1740	QETN1HM-225Z	E CAP.	2.2μF 50V	M
C1530	QCB32HK-561Z	C CAP.	560pF 500V	K	C1741	NCB31CK-104X	C CAP.	0.1μF 16V	K
C1531	QEH1EM-108Z	E CAP.	1000μF 25V	M	C1742	NCB31CK-104X	C CAP.	0.1μF 16V	K
C1533	QEH1EM-108Z	E CAP.	1000μF 25V	M	C1743	QETN1CM-107Z	E CAP.	100μF 16V	M
C1535	QCB32HK-101Z	C CAP.	100pF 500V	K	C1744	NCB31HK-102X	C CAP.	1000pF 50V	K
C1536	QFLC1HJ-103Z	M CAP.	0.01μF 50V	J	C1745	NCB31EK-473X	C CAP.	0.047μF 25V	K
C1540	QFV71HJ-104Z	MF CAP.	0.1μF 50V	J	C1746	NCB31EK-473X	C CAP.	0.047μF 25V	K

△	Symbol No.	Part No.	Part Name	Description	Local
CAPACITOR					
	C1747	NCB31EK-473X	C CAP.	0.047μF 25V K	
	C1748	QETN1CM-476Z	E CAP.	47μF 16V M	
	C1749	QETN1HM-106Z	E CAP.	10μF 50V M	
	C1751	NCB31CK-104X	C CAP.	0.1μF 16V K	
	C1752	NCB31CK-104X	C CAP.	0.1μF 16V K	
	C1753	NCB31CK-104X	C CAP.	0.1μF 16V K	
	C1760	NCB31HK-104X	C CAP.	0.1μF 50V K	
	C1761	QETN1CM-107Z	E CAP.	100μF 16V M	
	C1770	QETN1HM-106Z	E CAP.	10μF 50V M	
	C1801	QETN1HM-106Z	E CAP.	10μF 50V M	
	C1802	QETN1HM-106Z	E CAP.	10μF 50V M	
	C1803	QETN1HM-106Z	E CAP.	10μF 50V M	
	C1804	QETN1HM-106Z	E CAP.	10μF 50V M	
	C1805	NCB31HK-104X	C CAP.	0.1μF 50V K	
	C1807	NCF31AZ-105X	C CAP.	1μF 10V Z	
	C1808	NCF31AZ-105X	C CAP.	1μF 10V Z	
	C1810	NCF31AZ-105X	C CAP.	1μF 10V Z	
	C1811	NCB31HK-104X	C CAP.	0.1μF 50V K	
	C1812	NCF31AZ-105X	C CAP.	1μF 10V Z	
	C1813	NCB31HK-103X	C CAP.	0.01μF 50V K	
	C1814	NCB31HK-104X	C CAP.	0.1μF 50V K	
	C1815	NCF31AZ-105X	C CAP.	1μF 10V Z	
	C1817	NCF31AZ-105X	C CAP.	1μF 10V Z	
	C1819	NCB31HK-104X	C CAP.	0.1μF 50V K	
	C1820	NCF31AZ-105X	C CAP.	1μF 10V Z	
	C1821	NCF31AZ-105X	C CAP.	1μF 10V Z	
	C1822	QETN1CM-477Z	E CAP.	470μF 16V M	
	C1823	QETN1CM-107Z	E CAP.	100μF 16V M	
	C1824	QETN1CM-107Z	E CAP.	100μF 16V M	
	C1825	NCB31HK-103X	C CAP.	0.01μF 50V K	
	C1826	NCB31HK-104X	C CAP.	0.1μF 50V K	
	C1827	NCB31HK-103X	C CAP.	0.01μF 50V K	
	C1829	NCB31HK-103X	C CAP.	0.01μF 50V K	
	C1830	NCB31HK-103X	C CAP.	0.01μF 50V K	
	C1831	NCB31HK-103X	C CAP.	0.01μF 50V K	
	C1833	QETN1HM-226Z	E CAP.	22μF 50V M	
	C1834	NDC31HJ-181X	C CAP.	180pF 50V J	
△	C1901	QFZ9075-104	MPP CAP.	0.1μF	
△	C1902	QFZ9075-473	MPP CAP.	0.047μF	
	C1903	QCZ9015-102Z	C CAP.	1000pF AC250V Z	
	C1904	QCZ9015-102Z	C CAP.	1000pF AC250V Z	
	C1905	QCZ9015-102Z	C CAP.	1000pF AC250V Z	
△	C1906	QFZ9072-224	MM CAP.	0.22μF	
	C1907	QEZO476-337	E CAP.	330μF 400V M	
	C1908	QFZO209-222	MPP CAP.	2200pF	
	C1910	NDC31HJ-471X	C CAP.	470pF 50V J	
	C1911	QEHR1EM-227Z	E CAP.	220μF 25V M	
	C1914	QETN1EM-227Z	E CAP.	220μF 25V M	
	C1915	QFLC1HJ-152Z	M CAP.	1500pF 50V J	
	C1916	NCB31HK-104X	C CAP.	0.1μF 50V K	
	C1952	QCB32HK-471Z	C CAP.	470pF 500V K	
	C1953	QEHQ1VM-108	E CAP.	1000μF 35V M	
	C1954	NCB31HK-102X	C CAP.	1000pF 50V K	
	C1955	QCB32HK-471Z	C CAP.	470pF 500V K	
	C1956	QETN1VM-227Z	E CAP.	220μF 35V M	
	C1957	QCB32HK-471Z	C CAP.	470pF 500V K	
	C1958	QEHQ1EM-228	E CAP.	2200μF 25V M	
	C1959	QCZO122-561	C CAP.	560pF 2000V K	
	C1960	QEZO203-227	E CAP.	220μF 160V M	
	C1961	QETN1HM-225Z	E CAP.	2.2μF 50V M	
	C1962	QETN1HM-106Z	E CAP.	10μF 50V M	
	C1964	QETN1CM-476Z	E CAP.	47μF 16V M	
	C1965	QETN1HM-225Z	E CAP.	2.2μF 50V M	
	C1968	NCB31CK-104X	C CAP.	0.1μF 16V K	
	C1972	QEHR1VM-476Z	E CAP.	47μF 35V M	
	C1973	QEHR1CM-107Z	E CAP.	100μF 16V M	
	C1974	NCB31CK-104X	C CAP.	0.1μF 16V K	
	C1975	QEHR1CM-227Z	E CAP.	220μF 16V M	
	C1976	QEHR1CM-107Z	E CAP.	100μF 16V M	
	C1977	QEHR1AM-477Z	E CAP.	470μF 10V M	
	C1978	NCB31HK-104X	C CAP.	0.1μF 50V K	
	C1980	QETN1CM-107Z	E CAP.	100μF 16V M	

△	Symbol No.	Part No.	Part Name	Description	Local
CAPACITOR					
△	C1991	QCZ9079-102	C CAP.	1000pF AV250V M	
△	C1992	QCZ9079-102	C CAP.	1000pF AV250V M	
△	C1993	QCZ9079-102	C CAP.	1000pF AV250V M	
TRANSFORMER					
	T1521	QQR1229-001	DRIVE TRANSF		
△	T1551	QQH0141-001	FB TRANSF		
△	T1901	QQS0165-001	SW TRANSF		
COIL					
	L1001	CE42050-001Z	BEADS CORE		
	L1002	CE42050-001Z	BEADS CORE		
	L1101	QQLZ014-R82	COIL	0.82μH	
	L1104	QQLZ44K-180Z	COIL	18μH	K
	L1480	QQR1138-001	CHOKO COIL		
	L1523	QQR1137-005	LINEARITY COIL		
	L1524	QQLZ034-240	COIL	24μH	
	L1540	QQLZ44J-5R6Z	COIL	5.6μH	J
	L1701	QQLZ44K-100Z	COIL	10μH	K
	L1702	QQLZ44K-100Z	COIL	10μH	K
	L1731	QQLZ44J-5R6Z	COIL	5.6μH	J
	L1732	QQLZ44J-5R6Z	COIL	5.6μH	J
	L1951	QQLZ034-460	COIL	46μH	
	L1953	QQLZ44J-5R6Z	COIL	5.6μH	J
	L1954	QQLZ44J-5R6Z	COIL	5.6μH	J
DIODE					
	D1101	DAN235K-X	SI. DIODE		
	D1350	1SS244-T2	SI. DIODE		
	D1352	RGF10J-5025-T3	SI. DIODE		
	D1353	MA111-X	SI. DIODE		
	D1354	MA111-X	SI. DIODE		
	D1355	MA111-X	SI. DIODE		
	D1356	MA111-X	SI. DIODE		
	D1357	MA111-X	SI. DIODE		
	D1358	MA111-X	SI. DIODE		
	D1360	1SS244-T2	SI. DIODE		
	D1370	1SS244-T2	SI. DIODE		
	D1372	MA3075/M/-X	ZENER DIODE		
	D1373	MA111-X	SI. DIODE		
	D1374	MA111-X	SI. DIODE		
	D1401	RGF10J-5025-T3	SI. DIODE		
	D1402	MTZJ75-T2	ZENER DIODE		
	D1405	1N4003-T2	SI. DIODE		
	D1408	MA111-X	SI. DIODE		
	D1480	MTZJ4.3A-T2	ZENER DIODE		
	D1521	RH3G-F1	SI. DIODE		
	D1522	31DF6N-FC5	SI. DIODE		
	D1523	RGF10J-5025-T3	SI. DIODE		
	D1541	RGF10J-5025-T3	SI. DIODE		
	D1550	MA111-X	SI. DIODE		
	D1551	RGF10J-5025-T3	SI. DIODE		
	D1553	RGF10J-5025-T3	SI. DIODE		
	D1554	RGF10J-5025-T3	SI. DIODE		
	D1592	MA3075/H/-X	ZENER DIODE		
	D1652	MA3330/L/-X	ZENER DIODE		
	D1653	MA3330/L/-X	ZENER DIODE		
	D1655	MA111-X	SI. DIODE		
	D1682	MA111-X	SI. DIODE		
	D1702	MA3024-X	ZENER DIODE		
	D1703	MA3051/M/-X	ZENER DIODE		
	D1704	MA3033-X	ZENER DIODE		
	D1730	MA111-X	SI. DIODE		
	D1731	MA111-X	SI. DIODE		
	D1732	MA111-X	SI. DIODE		
	D1733	MA111-X	SI. DIODE		
	D1760	SLR-342VR-T16	LED		

△ Symbol No.	Part No.	Part Name	Description	Local	△ Symbol No.	Part No.	Part Name	Description	Local
DIODE					TRANSISTOR				
D1770	MA111-X	SI. DIODE			Q1686	DTC323TK-X	DIGI. TRANSISTOR		
D1771	P1241-04	PHOTO CONDUCTOR			Q1701	2SB709A/QR/-X	TRANSISTOR		
D1801	MA3120/M/-X	ZENER DIODE			Q1702	2SB709A/QR/-X	TRANSISTOR		
D1802	MA3120/M/-X	ZENER DIODE			Q1703	FMC2A-X	D.TRANSISTOR		
D1807	MA3100/M/-X	ZENER DIODE			Q1720	2SB709A/QR/-X	TRANSISTOR		
D1808	MA3100/M/-X	ZENER DIODE			Q1770	2SB709A/QR/-X	TRANSISTOR		
D1901	GSIB460	BRIDGE DIODE			Q1801	DTC323TK-X	DIGI. TRANSISTOR		
D1903	MTZJ12C-T2	ZENER DIODE			Q1802	DTC323TK-X	DIGI. TRANSISTOR		
D1904	EG01C-T2	SI. DIODE			Q1803	2SB709A/QR/-X	TRANSISTOR		
D1906	EG01C-T2	SI. DIODE			Q1804	2SC1740S/QR/-T	TRANSISTOR		
D1907	MA3150/M/-X	ZENER DIODE			Q1860	2SD601A/QR/-X	TRANSISTOR		
D1908	MTZJ27B-T2	ZENER DIODE			Q1861	2SB709A/QR/-X	TRANSISTOR		
D1909	MA111-X	SI. DIODE			Q1862	2SB709A/QR/-X	TRANSISTOR		
D1910	MA111-X	SI. DIODE			Q1952	2SD601A/QR/-X	TRANSISTOR		
D1911	RGP10J-TS-T3	SI. DIODE			Q1953	2SD601A/QR/-X	TRANSISTOR		
D1912	1SS133-T2	SI. DIODE			Q1954	2SD601A/QR/-X	TRANSISTOR		
D1914	ERC30-02L38	SI. DIODE			IC				
D1952	ERC30-02L38	SI. DIODE			IC1130	M52342SP	I.C(MONO-ANA)		
D1953	RGP10J-5025-T3	SI. DIODE			IC1401	AN5522	I.C(MONO-ANA)		
D1954	RGP30B-F1	SI. DIODE			IC1480	UPC358G2-XE	I.C(MONOLITHIC)		
D1956	31DF6N-FC5	SI. DIODE			IC1602	NJW1138M-X	I.C(MONO-ANA)		
D1964	MA3330/L/-X	ZENER DIODE			IC1650	AN5277	I.C(MONO-ANA)		
D1965	1SS133-T2	SI. DIODE			IC1701	TDA9386N22S0868	I.C(MICRO-COMP)		
D1966	MA3068/M/-X	ZENER DIODE			IC1702	AT24C08-21WS3	I.C(MEMORY-OTH)		
D1968	MA111-X	SI. DIODE			IC1760	GP1UM281QK	IR DETECT UNIT	(SERVICE)	
D1969	MA111-X	SI. DIODE			IC1801	MM1492AF	I.C(MONO-ANA)		
D1971	MA111-X	SI. DIODE			IC1901	STR-F6709A/F7	I.C(HYBRID)		
TRANSISTOR					IC1951	SE135N	I.C(HYBRID)		
Q1101	2SC5083/L-P/-T	TRANSISTOR			IC1972	R1141Q331B-X	REGULATE		
Q1102	UN2212-X	DIGI. TRANSISTOR			IC1974	AN80T36	REG IC		
Q1104	2SB709A/QR/-X	TRANSISTOR			OTHERS				
Q1105	UN2212-X	DIGI. TRANSISTOR				LC30114-001C-H	LED HOLDER		
Q1106	UN2212-X	DIGI. TRANSISTOR				CM35921-005-H	CDS HOLDER		
Q1108	2SD601A/QR/-X	TRANSISTOR			CF1106	QAX0639-001Z	C TRAP		
Q1109	2SB709A/QR/-X	TRANSISTOR			CF1130	QAX0642-001Z	C FILTER		
Q1110	UN2212-X	DIGI. TRANSISTOR			CF1140	QAX0695-001Z	C FILTER		
Q1111	2SD601A/QR/-X	TRANSISTOR			CF1141	QAX0696-001Z	C FILTER		
Q1130	2SB709A/QR/-X	TRANSISTOR			CF1142	QAX0697-001Z	C FILTER		
Q1131	UN2212-X	DIGI. TRANSISTOR			CL1001	QZW0027-002	WIRE CLAMP		
Q1132	2SD601A/QR/-X	TRANSISTOR				CL1002	QZW0027-004	WIRE CLAMP	
Q1133	2SB709A/QR/-X	TRANSISTOR				CL1003	QZW0027-004	WIRE CLAMP	
Q1134	UN2212-X	DIGI. TRANSISTOR			△ CP1951	ICP-N75-Y	IC PROTECTOR		
Q1135	UN2212-X	DIGI. TRANSISTOR			△ CP1952	ICP-N50-Y	IC PROTECTOR		
Q1136	2SD601A/QR/-X	TRANSISTOR			△ CP1953	ICP-N75-Y	IC PROTECTOR		
Q1137	2SD601A/QR/-X	TRANSISTOR			△ F1901	QMF51E2-4R0J4	FUSE		
Q1138	UN2212-X	DIGI. TRANSISTOR			FC1901	CEMG002-001Z	FUSE CLIP		
Q1301	2SB709A/QR/-X	TRANSISTOR			J1770	QNS0155-001	3.5 JACK		
Q1302	2SB709A/QR/-X	TRANSISTOR				J1771	QNN0282-003	PIN JACK	
Q1350	STC344-T	TRANSISTOR				J1772	QNN0282-002	PIN JACK	
Q1351	2SA1321-T	TRANSISTOR				J1773	QNN0282-001	PIN JACK	
Q1352	2SB709A/QR/-X	TRANSISTOR				J1801	QNN0349-001	PIN JACK	
Q1360	STC344-T	TRANSISTOR				J1802	QNN0349-002	PIN JACK	
Q1361	2SA1321-T	TRANSISTOR				J1803	QNN0348-001	PIN JACK	
Q1370	STC344-T	TRANSISTOR				J1804	QNN0349-001	PIN JACK	
Q1371	2SA1321-T	TRANSISTOR				K1104	QQR1113-001Z	FERRITE BEADS	
Q1374	2SD601A/QR/-X	TRANSISTOR				K1106	QQR1113-001Z	FERRITE BEADS	
Q1375	2SD601A/QR/-X	TRANSISTOR				K1701	QQR1113-001Z	FERRITE BEADS	
Q1376	2SD601A/QR/-X	TRANSISTOR				K1901	QQR1113-001Z	FERRITE BEADS	
Q1480	2SD1408/OY/-LB	POW TRANSISTOR				K1902	QQR1114-001Z	FERRITE BEADS	
Q1521	2SC2655/Y/-T	TRANSISTOR				K1903	QQR1114-001Z	FERRITE BEADS	
Q1522	2SD2634-YD	POW TRANSISTOR				K1951	QQR1113-001Z	FERRITE BEADS	
Q1591	2SA1208/ST/Z1-T	TRANSISTOR				K1953	QQR1113-001Z	FERRITE BEADS	
Q1592	UN2212-X	DIGI. TRANSISTOR				K1954	QQR1113-001Z	FERRITE BEADS	
Q1660	2SD601A/QR/-X	TRANSISTOR							
Q1661	2SD601A/QR/-X	TRANSISTOR							
Q1683	2SB709A/QR/-X	TRANSISTOR							
Q1684	2SB709A/QR/-X	TRANSISTOR							
Q1685	DTC323TK-X	DIGI. TRANSISTOR							

△	Symbol No.	Part No.	Part Name	Description	Local
OTHERS					
	K1955	QQR1214-001Y	FERRITE BEADS		
△	LF1901	QQR0673-004	LINE FILTER		
△	LF1902	QQR1035-002	LINE FILTER		
△	PC1901	PC123F2	IC(PHOTO COUPLE)		
△	RY1901	QSK0092-001	RELAY		
	S1780	QSW0619-003Z	TACT SWITCH	MENU	
	S1781	QSW0619-003Z	TACT SWITCH	CH-	
	S1782	QSW0619-003Z	TACT SWITCH	CH+	
	S1783	QSW0619-003Z	TACT SWITCH	VOL-	
	S1784	QSW0619-003Z	TACT SWITCH	VOL+	
△	S1901	QSW0846-001	PUSH SWITCH	POWER	
	SF1101	QAX0325-001	SAW FILTER		
	SF1102	QAX0731-001	SAW FILTER		
△	SK1351	QNZ0537-001	CRT SOCKET		
	TH1901	QAD0134-4R5	P THERMISTOR		
	TU1001	QAU0185-005	TUNER		
△	VA1901	QAF0052-621	VARISTOR		
	W1008	NRSA63J-0R0X	MG R	0.0Ω 1/16W	J
	W1010	NRSA63J-0R0X	MG R	0.0Ω 1/16W	J
	W1052	NRSA63J-0R0X	MG R	0.0Ω 1/16W	J
	W1071	NRSA63J-0R0X	MG R	0.0Ω 1/16W	J
	W1096	NRSA63J-0R0X	MG R	0.0Ω 1/16W	J
	W1239	NRSA63J-0R0X	MG R	0.0Ω 1/16W	J
	W1257	NRSA63J-0R0X	MG R	0.0Ω 1/16W	J
	W1307	NRSA63J-0R0X	MG R	0.0Ω 1/16W	J
	W1309	NRSA63J-0R0X	MG R	0.0Ω 1/16W	J
	W1317	NRSA63J-0R0X	MG R	0.0Ω 1/16W	J
	W1322	NRSA63J-0R0X	MG R	0.0Ω 1/16W	J
	W1325	NRSA63J-0R0X	MG R	0.0Ω 1/16W	J
	W1326	NRSA63J-0R0X	MG R	0.0Ω 1/16W	J
	W1330	NRSA63J-0R0X	MG R	0.0Ω 1/16W	J
	W1333	NRSA63J-0R0X	MG R	0.0Ω 1/16W	J
	W1375	NRSA63J-0R0X	MG R	0.0Ω 1/16W	J
	W1379	NRSA63J-0R0X	MG R	0.0Ω 1/16W	J
	W1388	NRSA63J-0R0X	MG R	0.0Ω 1/16W	J
	W1417	NRSA63J-0R0X	MG R	0.0Ω 1/16W	J
	W1418	NRSA63J-0R0X	MG R	0.0Ω 1/16W	J
	W1430	NRSA63J-0R0X	MG R	0.0Ω 1/16W	J
	X1701	QAX0737-001	CRYSTAL		
	Y1001	NRSA63J-0R0X	MG R	0.0Ω 1/16W	J
	Y1002	NRSA63J-0R0X	MG R	0.0Ω 1/16W	J
	Y1005	NRSA63J-0R0X	MG R	0.0Ω 1/16W	J
	Y1130	NRSA63J-0R0X	MG R	0.0Ω 1/16W	J
	Y1301	NRSA63J-0R0X	MG R	0.0Ω 1/16W	J
	Y1601	NRSA63J-0R0X	MG R	0.0Ω 1/16W	J
	Y1604	NRSA63J-0R0X	MG R	0.0Ω 1/16W	J

△	Symbol No.	Part No.	Part Name	Description	Local
---	------------	----------	-----------	-------------	-------

DIFFERENCE PARTS LIST BETWEEN AV-25LX3, AV-25LX3/A, AV-25LX3/AU AND AV-2568TEE


In the DIFFERENCE PARTS LIST BETWEEN AV-25LX3, AV-25LX3/A, AV-25LX3/AU and AV-2568TEE, only difference points between these models are written. For other parts not mentioned in the list, please refer to the PARTS LIST(P51 – P56) for the AV-25LX3.

DIFFERENCE PARTS LIST

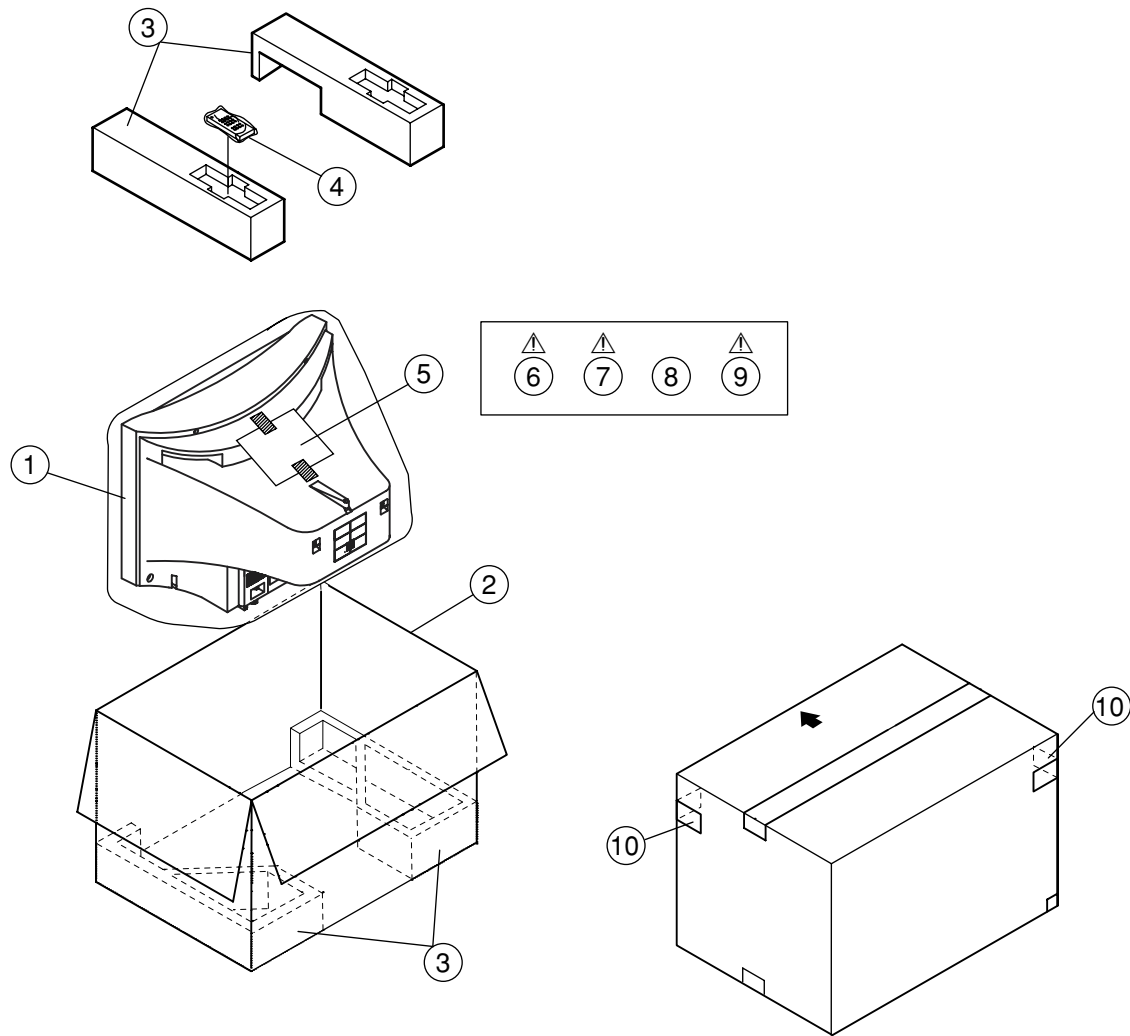
△	Symbol No.	Part No.				Part Name
		AV-25LX3	AV-25LX3/A	AV-25LX3/AU	AV-2568TEE	
		SCH-1087A-H2	←	SCH-1098A-H2	SCH-1097A-H2	MAIN PWB
	IC1701	TDA9386N22S0868	←	TDA9386N22S0866	TDA9365N23S0874	IC
	R1801	—	—	NRSA63J-750X(75Ω, 1/16W, J)	—	MG R
	R1802	—	—	NRSA63J-750X(75Ω, 1/16W, J)	—	MG R
	R1817	—	—	NRSA63J-101X(100Ω, 1/16W, J)	—	MG R
	R1819	—	—	NRSA63J-101X(100Ω, 1/16W, J)	—	MG R
	C1806	—	—	QFLC1HJ-104Z(0.1μF, 50V, J)	—	M CAP.
	C1809	—	—	NCB31HK-103X (0.01μF, 50V, K)	—	C CAP.
	J1801	QNN0349-001	←	QNZ0454-001	QNN0349-001	PIN JACK

REMOTE CONTROL UNIT PARTS LIST

RM-C1010-1H [AV-25LS3, AV-25LS3/AU]
RM-C1011-1H [AV-25LH3]
RM-C1014-1H [AV-25LX3, AV-25LX3/A, AV-25LX3/AU]
RM-C1013-1H [AV-2568TEE]

 Ref. No.	Part No.	Part Name	Description	Local
	25-1168F	BATTERY COVER		

PACKING



PACKING PARTS LIST

△ Ref.No.	Part No.	Part Name	Description	Local
1	CP30967-004-H	POLY BAG		
2	GG10044-046B-H	P CASE		
3	GG10135-001B-H	CUSHION ASSY		
4	RM-C1010-1H	RC HAND UNIT	[AV-25LS3, AV-25LS3 _{AU}]	
4	RM-C1011-1H	RC HAND UNIT	[AV-25LH3]	
4	RM-C1014-1H	RC HAND UNIT	[AV-25LX3, AV-25LX3 _A , AV-25LX3 _{AU}]	
4	RM-C1013-1H	RC HAND UNIT	[AV-2568TEE]	
5	CP30966-001-H	POLY BAG		
△ 6	LCT1170-001A-H	INST BOOK	[AV-25LS3, AV-25LS3 _{AU} , AV-25LX3, AV-25LX3 _A , AV-25LX3 _{AU}]	
△ 6	LCT1177-001A-H	INST BOOK	[AV-25LH3]	
△ 6	LCT1178-001A-H	INST BOOK	[AV-2568TEE]	
△ 7	LCT1171-001A-H	DIGEST MANUAL	[AV-25LX3, AV-25LX3 _A]	
8	BT-56001-2	WARRANTY CARD	[AV-25LS3 _{AU} , AV-25LX3 _{AU}]	
8	BT-54012-2	WARRANTY CARD	[AV-2568TEE]	
△ 9	QAM0055-001	CONVERSION PLUG	[AV-25LX3 _A]	
10	BT-56002-2	S CENTER LIST	[AV-25LS3 _{AU} , AV-25LX3 _{AU}]	
11	GG20025-001A-H	CORNER LABEL	(x2)	